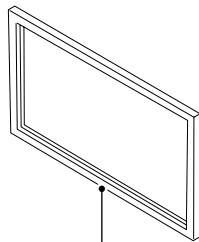
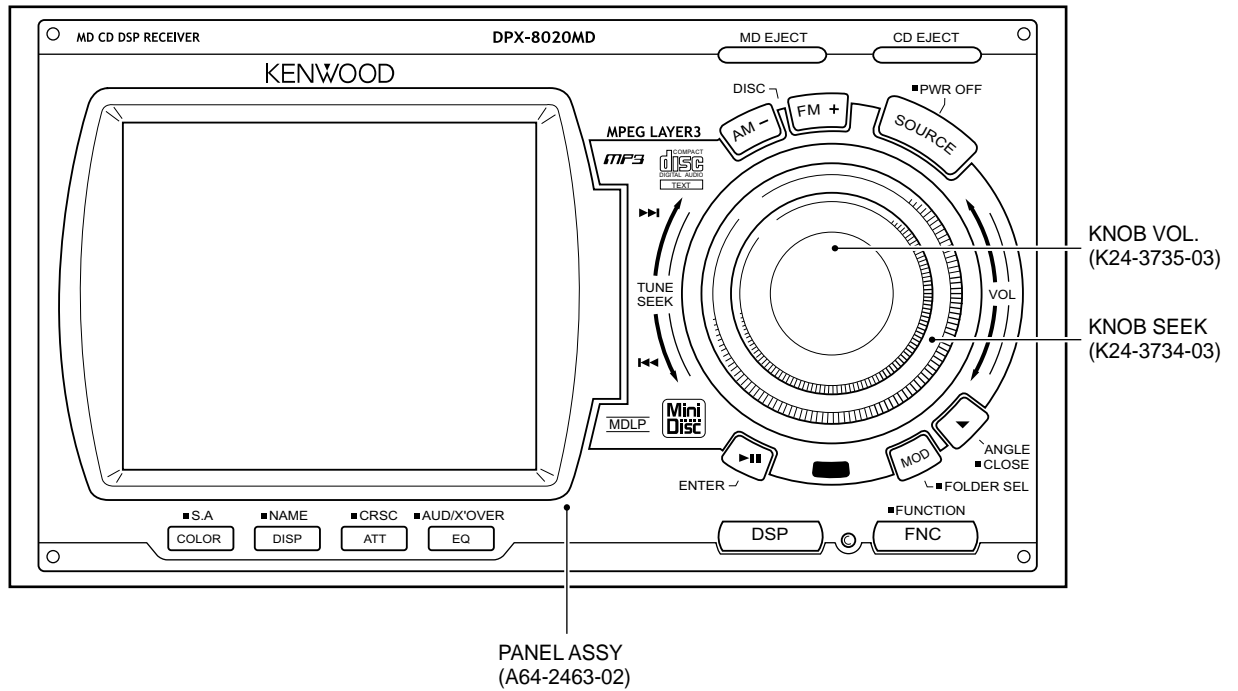
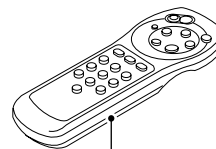


# DPX-8020MD

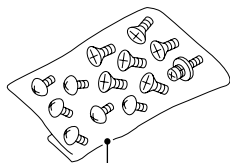
## SERVICE MANUAL



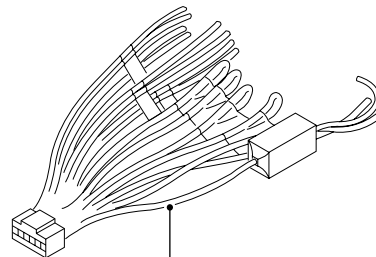
ESCUTCHEON ASSY  
(B07-3046-04)



REMOTE CONTROLLER ASSY  
(A70-2006-05)



SCREW SET  
(N99-1701-05)



DC CORD  
(E30-4975-05)



# DPX-8020MD

## MICROCOMPUTER'S TERMINAL DESCRIPTION

### (X14-) IC1 : System $\mu$ -com

PIN No.	Pin Name	I/O	Description	Processing Operation
1	DSP DATAOUT	O	DSP data output	
2	DSP CLK	O	DSP clock output	
3	DSP SEL	O	DSP selector	
4	DSP RST	O	DSP reset	L: Reset
5	DATAH	O	External CH data output	
6	DATA C	I	External CH data input	
7	CHCLK	I/O	External CH clock in/output	
8	BYTE	I	External data bus width switching	
9	CNVSS	I	Processor mode switching	
10	CHCON1	O	External CH1 select	
11	NC	O	Not used	
12	RESET	I	Reset input	L: Reset
13	XOUT	O	System clock output	
14	VSS	I	GND	
15	XIN	I	System clock input	
16	VCC	I	Power input	
17	NMI	I	—	
18	PN REQ	I	Panel communication request	
19	BU DET I	I	B.U detection	H: Power down
20	REQC	I	External CH reception request	
21	PWIC SVR	O	Power IC control	H: ON
22	PON	O	Power control	H: ON
23	PWIC STBY	O	Power IC standby	H: ON
24	AMP CTRL	O	External amp control	
25	TEST	O	Power IC control	L: Test mode
26	BUZZ	O	Beep output	
27	PCON	O	External amp control	H: ON L: ALL OFF
28	PANT	O	Power antenna control	H: ON
29	SCL	I/O	I2C clock output	
30	SDA	I/O	I2C data in/output	
31	SYS DATA	O	SYS data output (FLASH TXD)	
32	PN DATA	I	Panel data input (FLASH RXD)	
33	PN CLK	O	Panel clock output (FLASH SCLK)	
34	SYS REQ	O	SYS communication request (FLASH BUSY)	
35	TEL DAOUT	O	—	
36	TEL DAIN	I	—	
37	TEL MUTE	O	—	H: TEL MUTE ON
38	CRSC 1	I	CRSC switching	
39	NC	I	Not used	
40	ILLUMI	I	Illumination detection	L: Illumination ON
41	LAMP	O	Lamp control (FLASH EPM)	H: ON
42	ACC DET	I	ACC detection	H: ACC OFF
43	PCON IN	I	P CON input	H: Protection ON
44	LED CD	O	LED control (CD)	H: LED ON
45	LED MD	O	LED control (MD)	H: LED ON
46	PN SCCON	O	Panel $\mu$ -com control (FLASH CE)	L: ON
47	LED LOGO	O	LED control (LOGO)	H: LED ON
48	DCDC24	O	DC/DC control	H: 24V Output
49	PMOT1	O	Panel motor control 1	
50	PMOT2	O	Panel motor control 2	

## MICROCOMPUTER'S TERMINAL DESCRIPTION

PIN No.	Pin Name	I/O	Description	Processing Operation
51	PM VR	O	Panel mechanism control	H: 5.1V L: 7.5V
52	PMD ET	I	Panel mechanism detection	L: ON H: OFF
53	OPEN SW	I	Panel open detection	L: OPEN
54	PON2	O	PON5 (2)	
55	CD MSTOP	O	CD mechanism stop	L: STOP
56	CD SW2	I	Disc detection (8/12cm check)	L: ON
57	CD AMUTE	I	CD mute request	L: MUTE
58	CD SW1	I	Loading detection (Loading SW)	L: ON
59	CD LO/EJ	I/O	CD Loading/Eject control	
60	CD MOTOR	O	CD Loading motor control	
61	CD SW3	I	Loading end detection (chucking SW)	L: ON
62	VCC	-	Power input	
63	TYPE 8CM	I	8cm CD detect	L: ON
64	VSS	-	GND	
65	MP3 SW	O	TEL/MP3 SW	
66	DIVER TYPE	I	DIVER	H: DIVER
67	AUX TYPE	I	AUX	H: AUX
68	TEL TYPE	I	TEL	H: TEL
69	TEL C1	O	TEL C1	L: ON
70	TEL C2	O	TEL C2	L: ON
71	MP3 TYPE	I	MP3	H: MP3
72	MD DET	I	MD detection	L: ON
73	MD LOE SW	I	MD PLAY STANDBY SW	H: ON
74	MD LOAD	O	MD motor control	
75	MD EJECT	O	MD motor control	
76	MD MSTOP	O	MD mechanism stop	L: STOP
77	MRST	O	CD/MD $\mu$ -com reset	L: RESET
78	MD AMUTE	I	MD mute request	L: MUTE
79	MD LOS/EJECT	I	MD position detect	L: ON
80	SD	I	Station detection	H: ON
81	DIVER	O	FM diver switch	L: ON
82	FM+B	O	FM power control	H: FM
83	AM+B	O	AM power control	H: AM
84	PARKING	I	PARKING ON/OFF detection	H: PARKING ON
85	DSP MUTE	O	DSP MUTE	H: MUTE ON
86	A SEL	O	A 354 selector	L: Data output
87	REQH	O	External CH transmission request	
88	MUTE	O	MUTE	H: MUTE ON
89	PW MUTE	O	Power IC mute	L: MUTE ON
90	NC	O	Not used	
91	LINE MUTE	I	LINE MUTE ON/OFF detection	L: LINE MUTE ON
92	REFCON	O	A/D reference voltage	
93	MPX	I	FM MPX detection	L: ST
94	CD DET	I	CD detection sensor input	L: CD (A/D input) Vth:2.5V
95	PMODE	I	Panel position sensor input	(A/D)
96	AVSS	I	Analog reference voltage	
97	FSD OUT	I	S meter input	H: Station detect Vth: 1.9V
98	VREF	-	Reference voltage	
99	AVCC	I	Power input	
100	DSP DATA IN	I	DSP data input	

# DPX-8020MD

## MICROCOMPUTER'S TERMINAL DESCRIPTION

### (X25-) IC1 : Panel $\mu$ -com

PIN No.	Pin Name	I/O	Description	Processing Operation
1	LCD2 DO	O	External LCD driver data output	
2	LCD2 CL	O	External LCD driver clock output	
3	NC	O	Not used	L: Fixed
4	REMO	I	Remote signal input	
5-7	NC	O	Not used	L: Fixed
8	BYTE	-		
9	CNVSS	I		
10,11	NC	O	Not used	L: Fixed
12	RESET	-	Reset	L: Reset
13	XOUT	-		
14	VSS	-	GND	
15	XIN	-	Clock input	
16	VCC	-	Power supply	
17	NC	I	Not used	
18	SYS REQ	I	System request input	
19	SP EN	O	Spectrum analyzer enable output	
20	PN SCCON	I	System control communication panel $\mu$ -COM operation control	
21	NC	O	Not used	L: Fixed
22	LED R	O	RED LED brightness adjustment	H: OFF
23	NC	O	Not used	L: Fixed
24	LED G	O	GREEN LED brightness adjustment	H: OFF
25	NC	O	Not used	L: Fixed
26	LED B	O	BLUE LED brightness adjustment	H: OFF
27	NC	O	Not used	L: Fixed
28	SP CLK	O	Spectrum analyzer clock output	
29	SP DATA IN	I	Spectrum analyzer data input	
30	SP DATA OUT	O	Spectrum analyzer data output	
31	PNL DATA	O	System control communication data output	
32	SYS DATA	I	System control communication data input	
33	PNL CLK	I	System control communication Panel clock input	
34	PNL REQ	O	System control communication Panel request output	
35	LCD1 DO	O	External LCD driver data output	
36	NC	I	Not used	
37	LCD1 CL	O	External LCD driver clock output	
38	LCD INH	O	LCD character unit forced extinction	L: OFF
39-41	NC	O	Not used	L: Fixed
42	LCD1 CE	O	External LCD driver select	H: LCD driver select
43	LCD2 CE	O	External LCD driver select	H: LCD driver select
44-49	NC	O	Not used	L: Fixed
50	PON	O	Power supply control	H: ON
51-61	NC	O	Not used	L: Fixed
62	VCC	-	Power supply	
63	NC	O	Not used	L: Fixed
64	VSS	-	GND	
65-71	NC	O	Not used	L: Fixed
72	RE IN	I	Input B	
73	RE BASE	I	Input A	
74	NC	O	Not used	L: Fixed
75	KR0	I	Key return signal input 0	
76	KR1	I	Key return signal input 1	

## MICROCOMPUTER'S TERMINAL DESCRIPTION

PIN No.	Pin Name	I/O	Description	Processing Operation
77	KR2	I	Key return signal input 2	
78	KR3	I	Key return signal input 3	
79	KR4	I	Key return signal input 4	
80	NC	O	Not used	L: Fixed
81	KS0	O	Key scan output 0	
82	KS1	O	Key scan output 1	
83	KS2	O	Key scan output 2	
84	KS3	O	Key scan output 3	
85-95	NC	O	Not used	L: Fixed
96	AVSS	-	GND	
97	NC	O	Not used	L: Fixed
98	VREF	-		
99	AVCC	-	Power supply	
100	NC	I	Not used	

### (X32-) IC1 : CD mecha $\mu$ -com

PIN No.	Pin Name	I/O	Description	Processing Operation
1-5	NC	O	—	L
6	BYTE	I	Bus width 8bit/16bit switch	H
7	CNVSS	I	—	L
8,9	NC	O	—	L
10	RESET	I	RESET	L: RESET H: Normal
11	XOUT	O	Clock output	—
12	VSS	-	—	—
13	XIN	I	Clock input	—
14	VCC	-	—	—
15	NMI	I		L: Interrupt H: Normal
16	INT3	I	Servo DSP (processor unit) interrupt	L: Interrupt H: Normal
17	INT2	I	Servo DSP (decoder unit) interrupt	L: Interrupt H: Normal
18	INT1	I	Servo DSP (ATAPI unit) interrupt	L: Interrupt H: Normal
19,20	NC	O	—	L
21	DCS	O	DAC chip select	L: SELECT
22	PD	O	Peripheral IC reset	L: RESET H: Normal
23	ML	O	DAC microprocessor communication data latch line	H: Latch
24	MC	O	DAC microprocessor communication clock line	—
25	MD	O	DAC microprocessor communication data line	—
26	NC	O	—	L
27	I2C CLK	I/O	For mechanical control communication (clock)	—
28	I2C DATA	I/O	For mechanical control communication (data)	—
29	MP3 I2C DATA	I/O	For STA013 control communication (data)	—
30	R	O	For flash write	L
31	MP3 I2C CLK	I/O	For STA013 control communication (clock)	—
32	W	O	For flash write	L
33	MP3 DATA	O	For MP3 data transmission (data)	
34	NC	O	—	L
35	MP3 CLK	O	For MP3 data transmission (clock)	—
36	MP3 REQ	I	MP3 data request	—
37	WAIT	I	Multiplex bus wait	L: BUSY H: READY
38	ALE	O	For multiplex bus	—
39	HOLD	I	For flash write	L

# DPX-8020MD

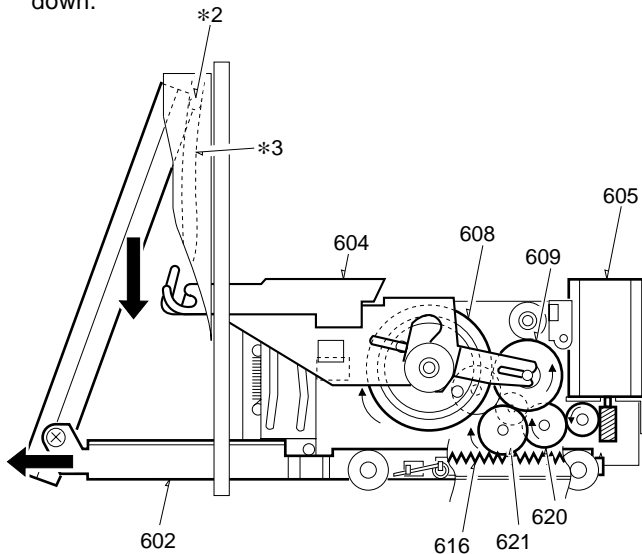
## MICROCOMPUTER'S TERMINAL DESCRIPTION

PIN No.	Pin Name	I/O	Description	Processing Operation
40	HLDA	O	—	L
41	NC	O	—	L
42	RDM	O	For multiplex bus	—
43	NC	O	—	L
44	WRM	O	For multiplex bus	—
45	NC	O	—	L
46	CS2	O	M24B chip select	L: SELECT
47-50	NC	O	—	L
51	SCLT	O	RF 1x/2x speed switch over	L: 2x H: 1x
52,53	NC	O	—	
54	MUTE-R	O	Mute (right)	L: Mute
55	MUTE-L	O	Mute (left)	L: Mute
56	LDON	O	Laser ON/OFF	L: OFF H: ON
57	MP3/CD	O	CD-DA/MP3 switch over	L: CD-DA H: MP3
58	PON	O	Peripheral IC power supply control	L: OFF H: ON
59	CDRW	O	RW switch over	L: Other H: RW
60	VCC	-	—	—
61	NC	O	—	L
62	VSS	-	—	—
63	AD7	I/O	Address/data (7bit) line	—
64	AD6	I/O	Address/data (6bit) line	—
65	AD5	I/O	Address/data (5bit) line	—
66	AD4	I/O	Address/data (4bit) line	—
67	AD3	I/O	Address/data (3bit) line	—
68	AD2	I/O	Address/data (2bit) line	—
69	AD1	I/O	Address/data (1bit) line	—
70	AD0	I/O	Address/data (0bit) line	—
71	RFOK	I	RF OK interrupt (unused)	L: Interrupt H: Normal
72	MSTOP	I	MSTOP detection	L: Interrupt H: Normal
73	INT4	I	Servo DSP (servo unit) interrupt	L: Interrupt H: Normal
74-78	NC	O	—	L
79	T3	I	Electrical management check test port	L
80	T2	I	Electrical management check test port	L
81	T1	I	Electrical management check test port	L
82	EMPH	I	Emphasis ON/OFF	L: OFF H: ON
83	RFOK	I	RFOK	L: NG H: OK
84	NC	O	—	L
85	SW3	I	Inner ring/track detection switch	L: ON H: OFF
86	DETECT	I	D track Quantity	L: DETECT
87-93	NC	O	—	L
94	AGND	-	—	—
95	NC	O	—	L
96	NC	-	—	L
97	AVCC	-	—	—
98-100	NC	O	—	L

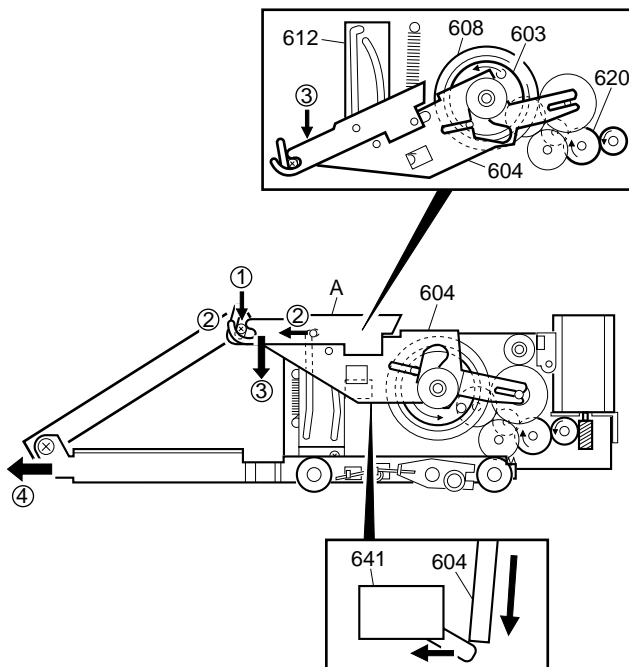
## PANEL MECHANISM DESCRIPTION

### A. Panel Opening

1. When Open button (switch) is pressed, the motor (605) rotates.
2. The rotation of the motor is transmitted forward through the rack gear (616) via the gears (620-622).
3. When the rack gear (616) moves, the panel (PA1) goes down.

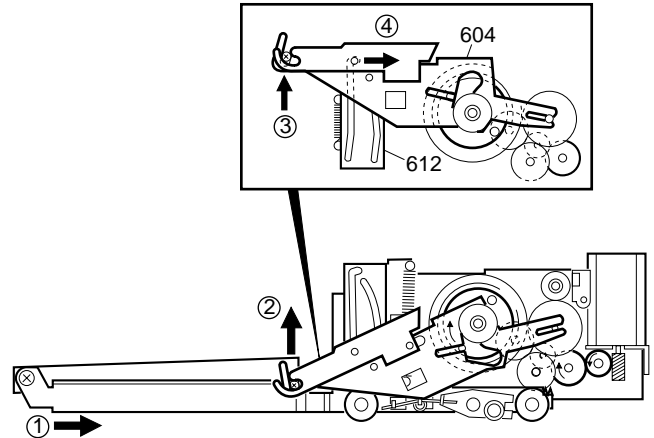


4. (1) The upper side of the panel pushes on the arm assembly (604) by the pin (\*2) and the groove of the rail (\*3).
- (2) The lock on the lever (A) is let go and the arm assembly (604) goes down.
- (3) When this happens, the planetary gear (603) rotates.
5. When the arm assembly goes down to the open position, the switch (641) is turned on. When the switch (641) is turned on, the motor stops after 950ms.

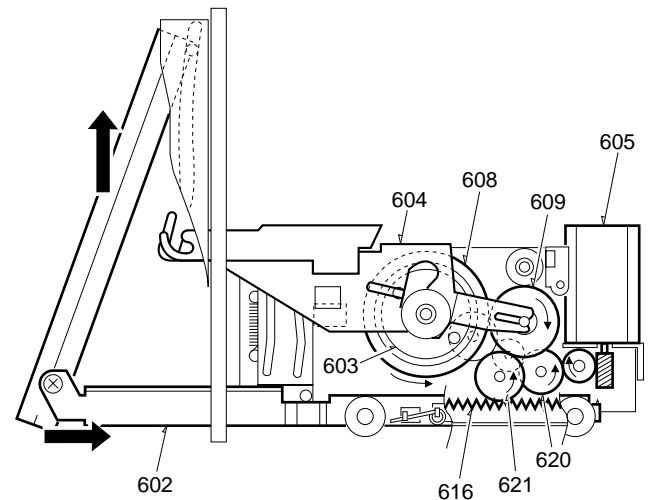


### B. Closing Behavior

1. The motor rotates in reverse direction.
2. The arm assembly (604) goes up. When the lever (A) goes into the lock position of the rail (612), the arm assembly (604) stops going up.



3. When the arm assembly (604) stops, by the rotation of the planetary gear (603), the motor rotation pushes the rack gear (616) backward via the gears (620-622).
4. By the close position information of the LPS (642), the motor (605) stops after 200ms.



### C. Angle Behavior

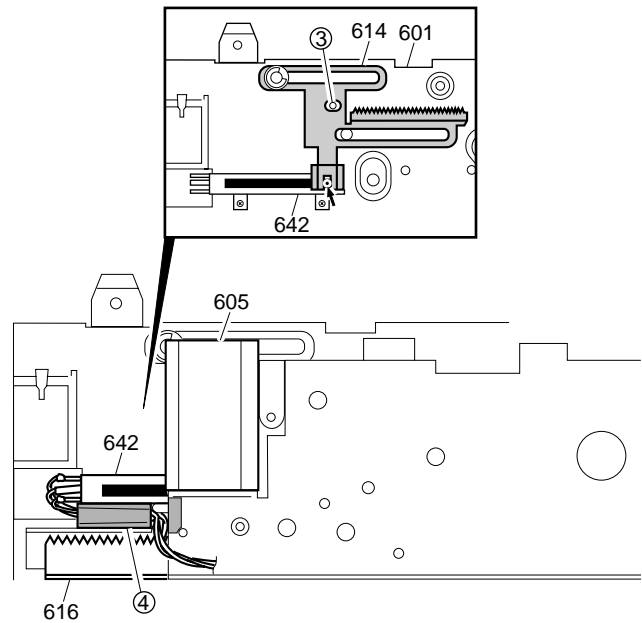
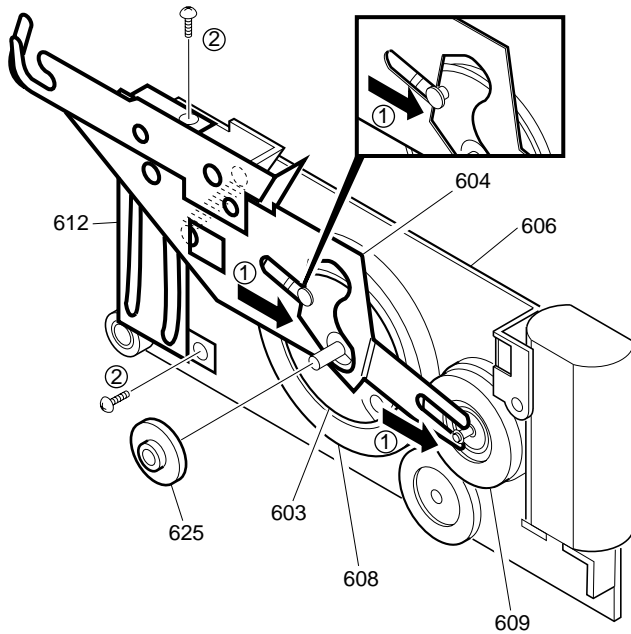
1. By the position information of the LPS (642), the panel angle is controlled.

# DPX-8020MD

## PANEL MECHANISM DESCRIPTION

### D. Assembly (Close Position)

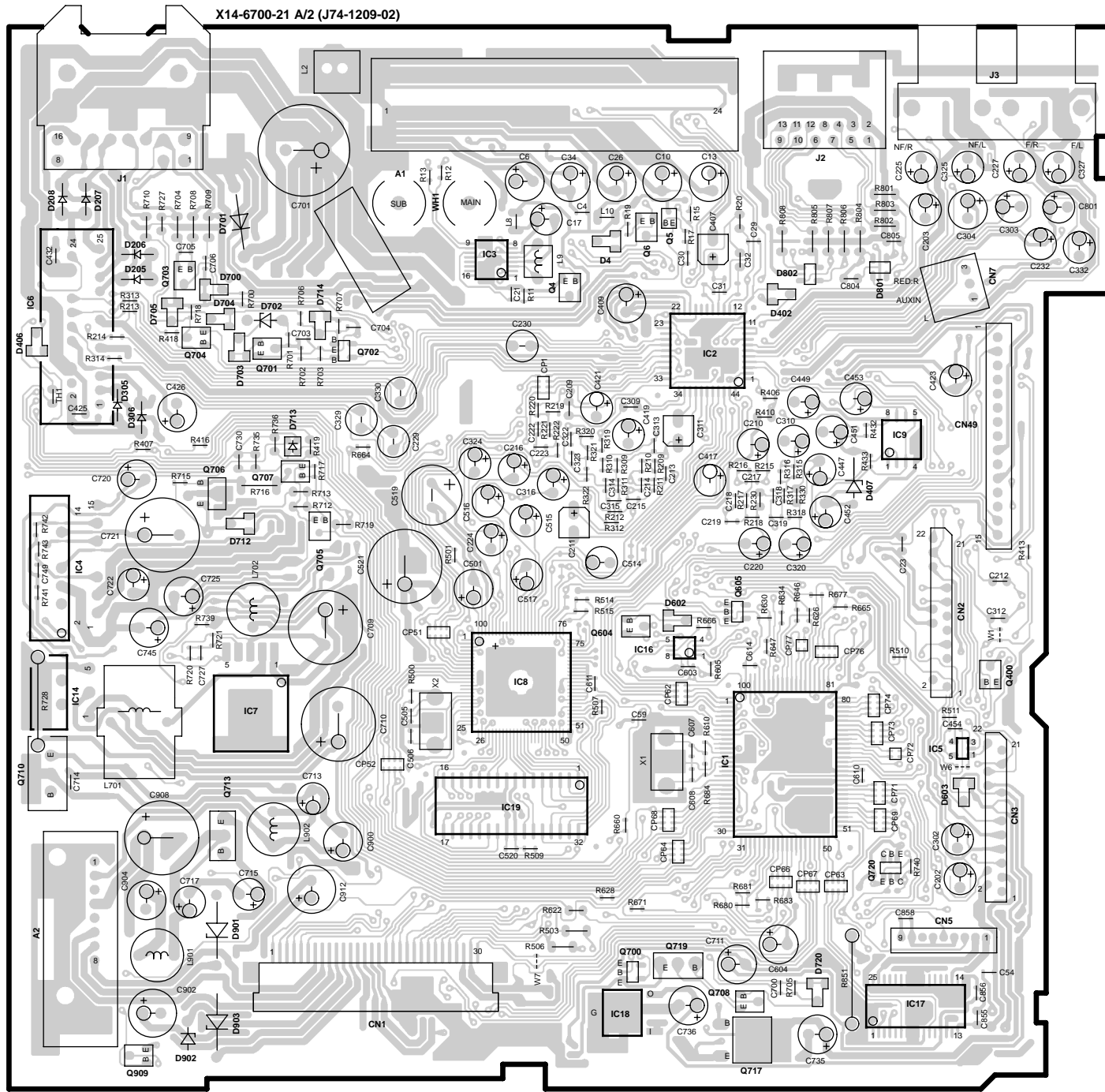
1. Align the arm assembly with the pin of the planetary gear (603).
2. Assemble these to the sub-chassis (606) along with the rail (612).
3. Align lever (614) hole and the hold of the chassis (601).
4. Lead wires of LPS should be kept in place with a tape so that they would not interfere with rack gear (616).





# PC BOARD (Component side view)

SYNTHESIZER UNIT (X14-6700-21)



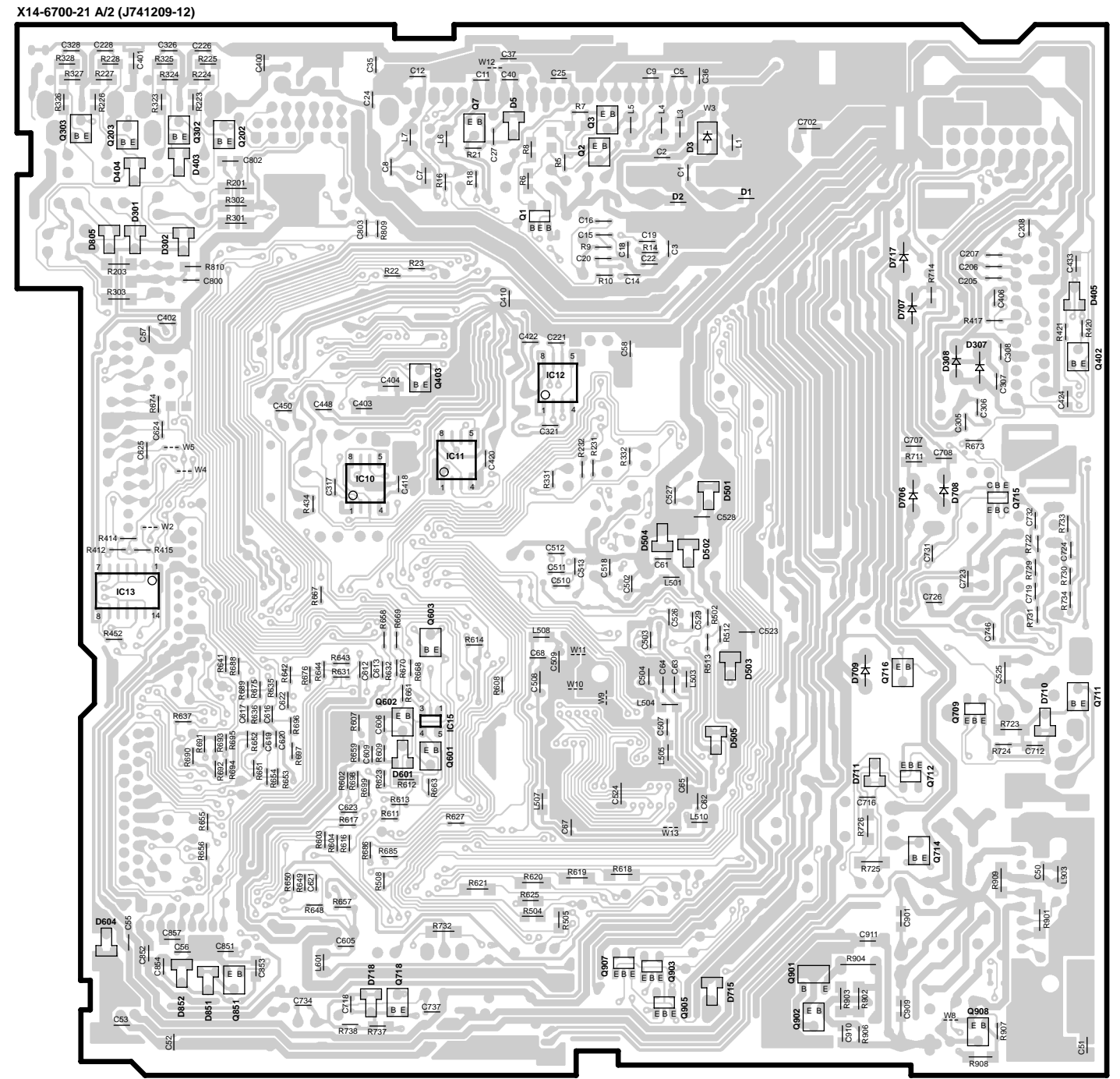
(X14-6700-21)

Ref. No.	IC1	IC2	IC4	IC6	IC7	IC8	IC9	IC14	IC16	IC17	IC18	IC19
Address	4D	3D	4A	3A	4B	4C	3E	4A	4D	5E	6C	5C
Ref. No.	Q604	Q605	Q700	Q701	Q702	Q703	Q704	Q705	Q706	Q707	Q708	Q710
Address	4C	4D	5C	3B	3B	2B	3B	4B	3B	3B	5D	5A
Ref. No.	Q717	Q719	Q720									
Address	6D	5D	5E									

Refer to the schematic diagram for the values of resistors and capacitors.

# PC BOARD (Foil side view)

SYNTHESIZER UNIT (X14-6700-21)



(X14-6700-21)

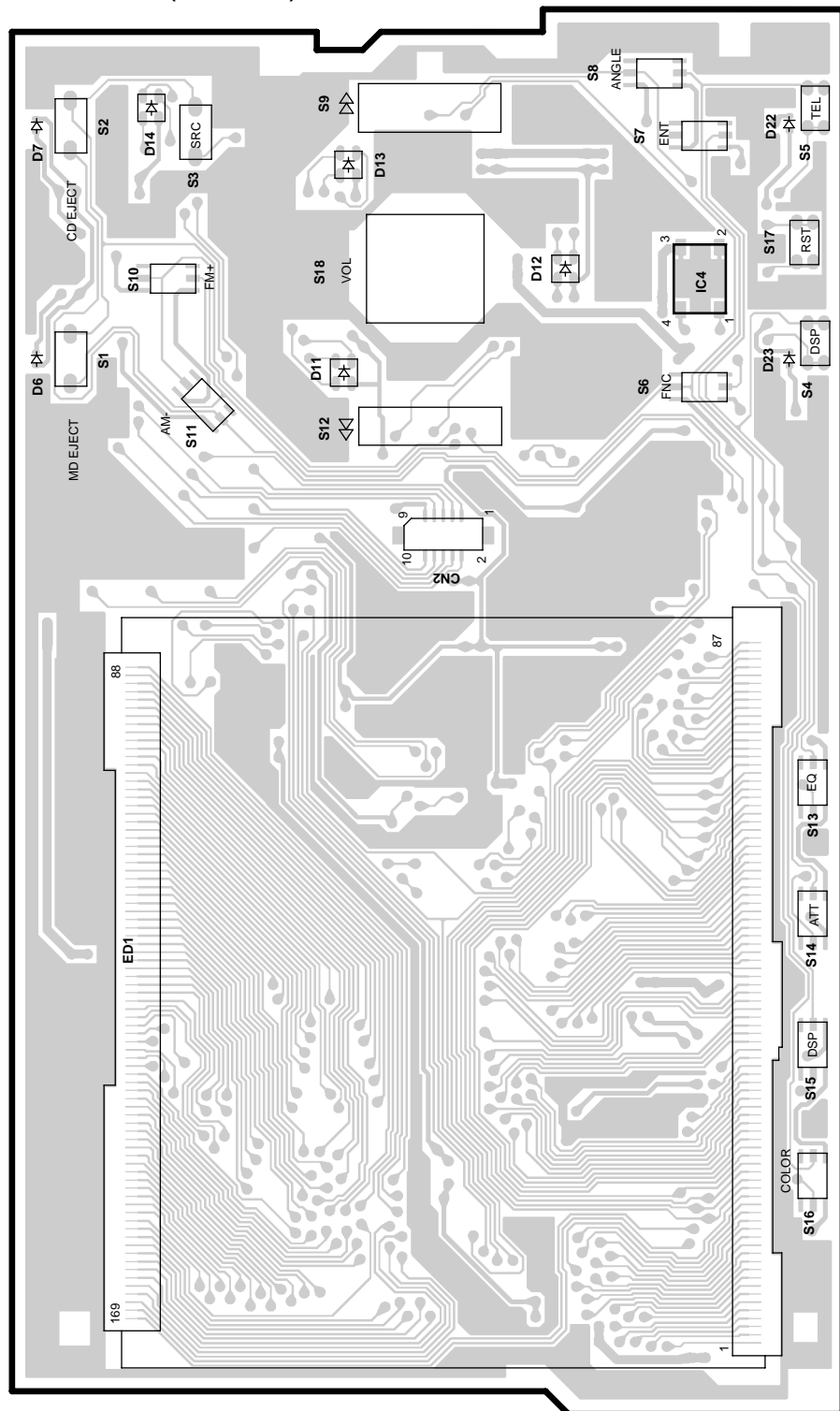
Ref. No.	IC10	IC11	IC12	IC15							
Address	3G	3H	3H	4H							
Ref. No.	Q2	Q3	Q7	Q202	Q203	Q302	Q303	Q402	Q403	Q601	Q602
Address	2H	2H	2H	2G	2F	2G	2F	3J	3H	4H	4G
Ref. No.	Q603	Q709	Q711	Q715	Q716	Q718	Q851	Q903	Q905	Q907	
Address	4H	4J	4J	3J	4J	5G	6G	5I	6I	5H	

Refer to the schematic diagram for the values of resistors and capacitors.

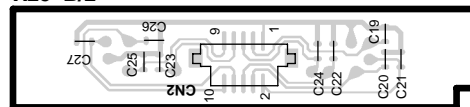
# PC BOARD (Component side view)

SWITCH UNIT (X25-8960-00)

X25-8960-00 A/2 (J74-1212-12)



X25 B/2



(X25-8960-00)

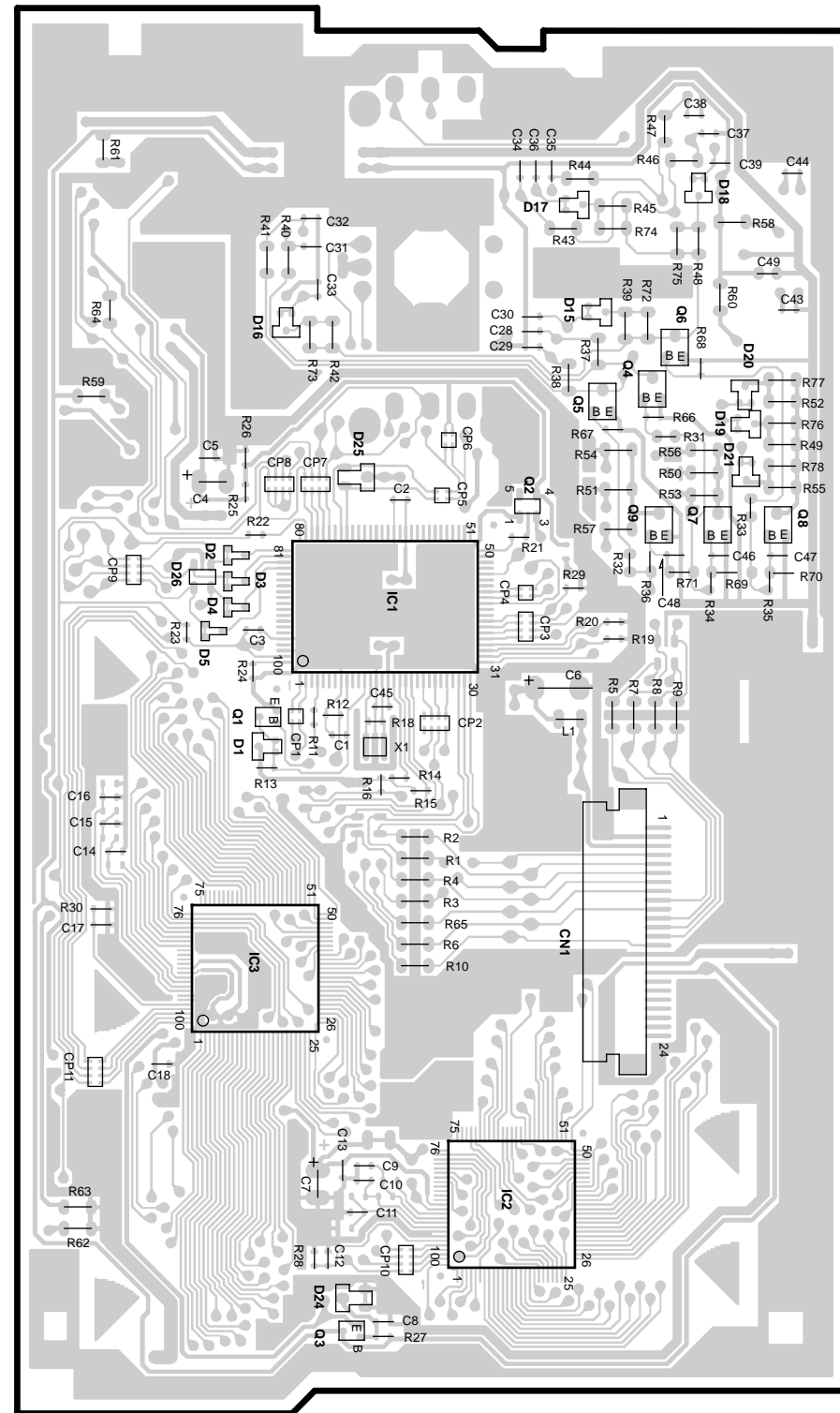
Ref. No.	Address
IC4	2N

Refer to the schematic diagram for the values of resistors and capacitors.

# PC BOARD (Foil side view)

SWITCH UNIT (X25-8960-00)

X25-8960-00 (J74-1212-12)



X25 B/2



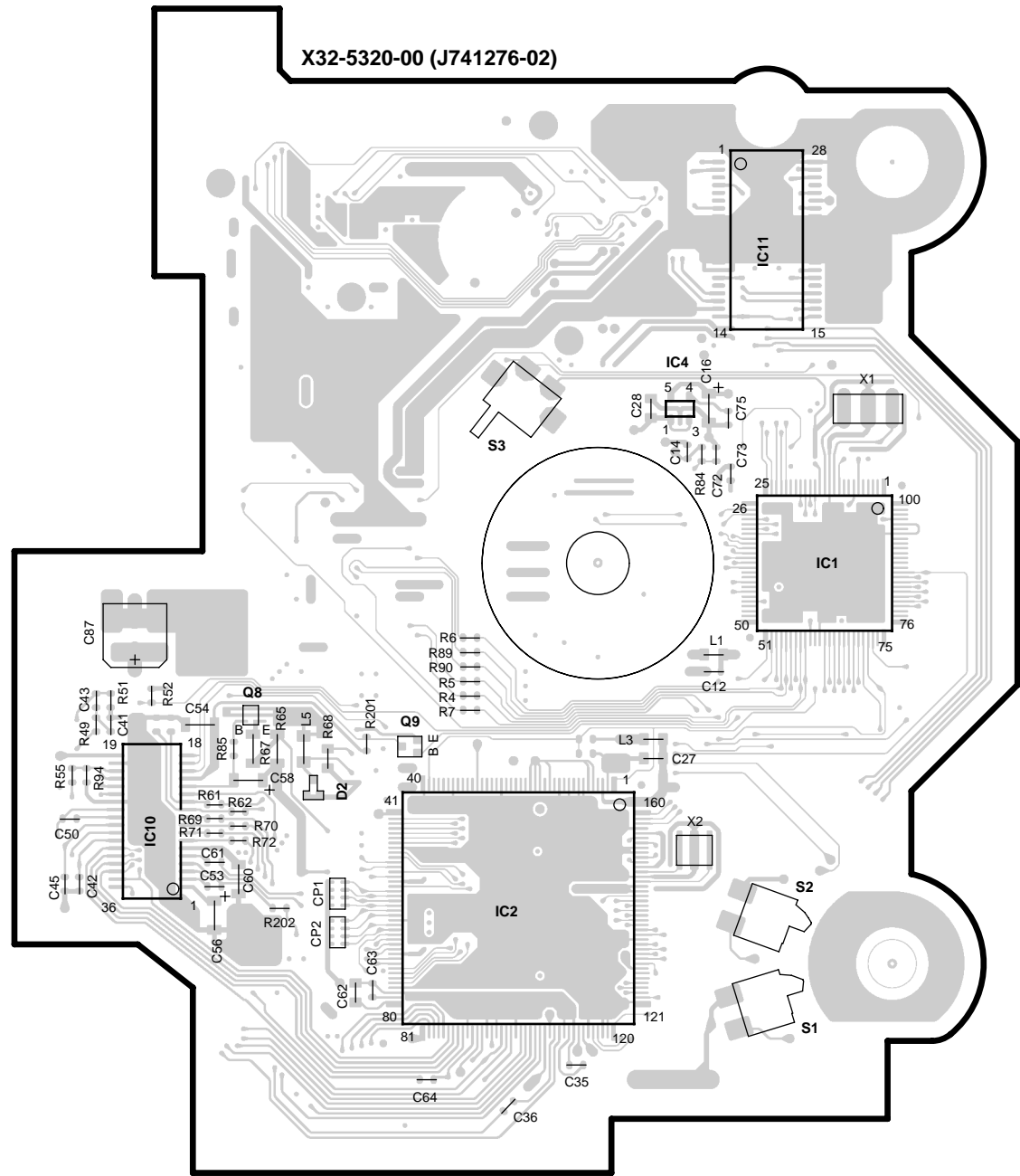
(X25-8960-00)

Ref. No.	Address
IC1	3R
IC2	5R
IC3	5Q
Q1	4Q
Q2	3R
Q3	6Q
Q4	3S
Q5	3R
Q6	2S
Q7	3S
Q8	3S
Q9	3S

Refer to the schematic diagram for the values of resistors and capacitors.

# PC BOARD (Component side view)

CD UNIT (X32-5320-00)



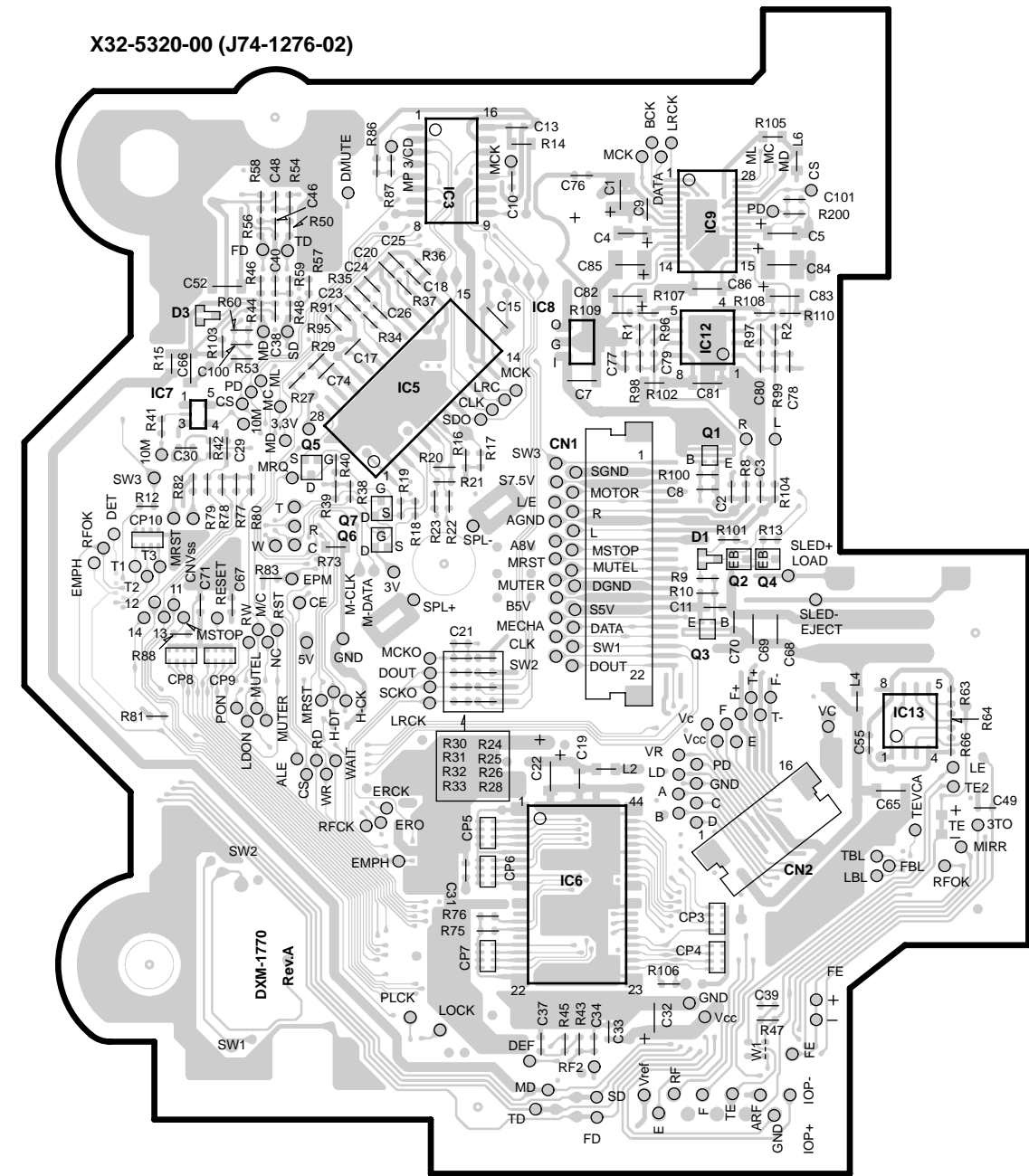
(X32-5320-00)

Ref. No.	IC1	IC2	IC4	IC10	IC11	Q8	Q9
Address	3X	4W	3W	4V	2X	4V	4V

Refer to the schematic diagram for the values of resistors and capacitors.

# PC BOARD (Foil side view)

CD UNIT (X32-5320-00)



(X32-5320-00)

Ref. No.	IC3	IC5	IC6	IC7	IC8	IC9	IC12	IC13	Q1	Q2	Q3	Q4	Q5	Q6	Q7
Address	2AB	3AB	4AB	3AA	2AB	2AC	2AC	4AD	3AC	3AC	4AC	3AC	3AA	3AA	3AA

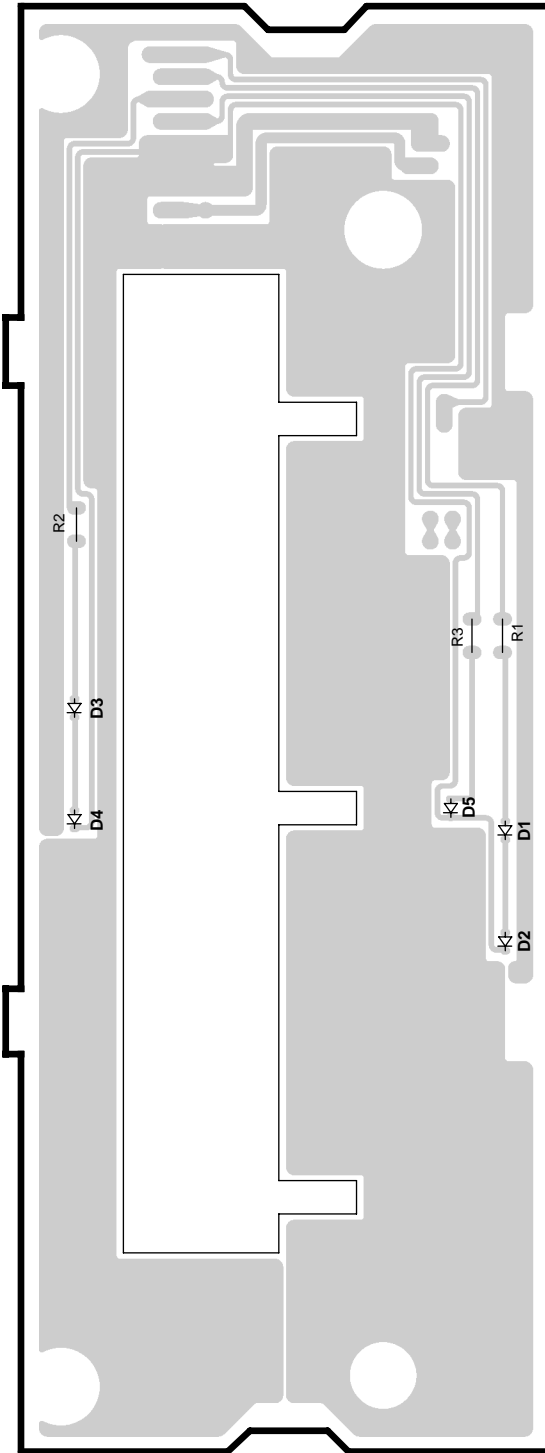
Refer to the schematic diagram for the values of resistors and capacitors.

# PC BOARD

SUB-CIRCUIT UNIT (X16-1240-00)

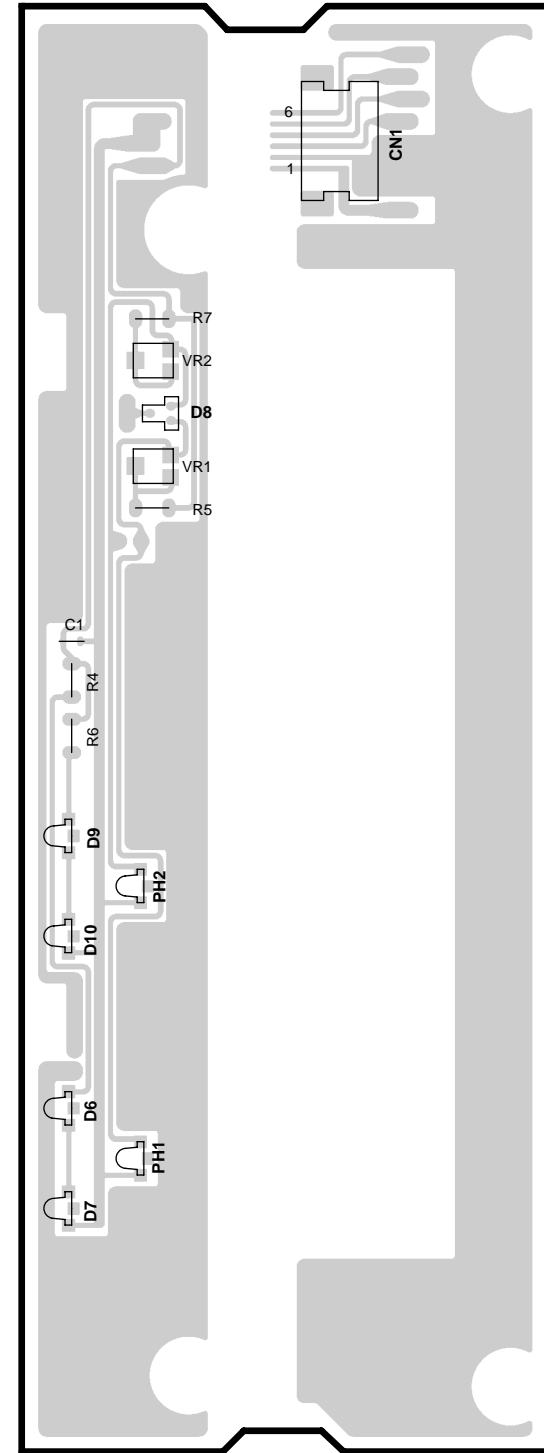
(Component side view)

X16-1240-00 (J74-1213-02)



(Foil side view)

X16-1240-00 (J74-1213-02)



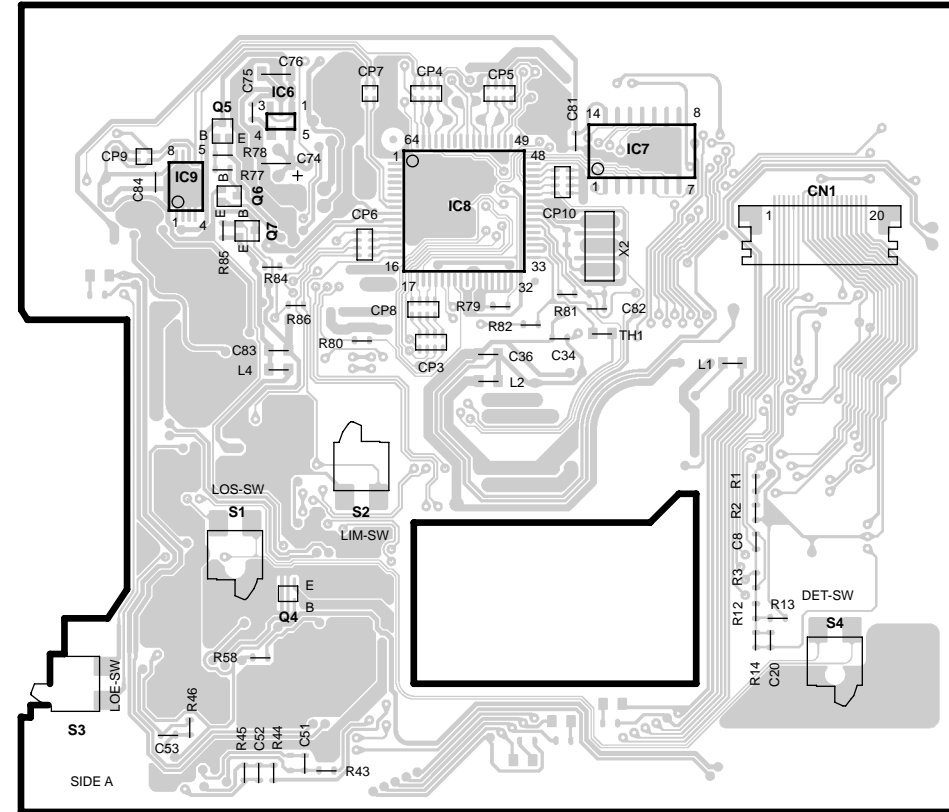
Refer to the schematic diagram for the values of resistors and capacitors.

# PC BOARD

MD UNIT (X33-3130-01)

(Component side view)

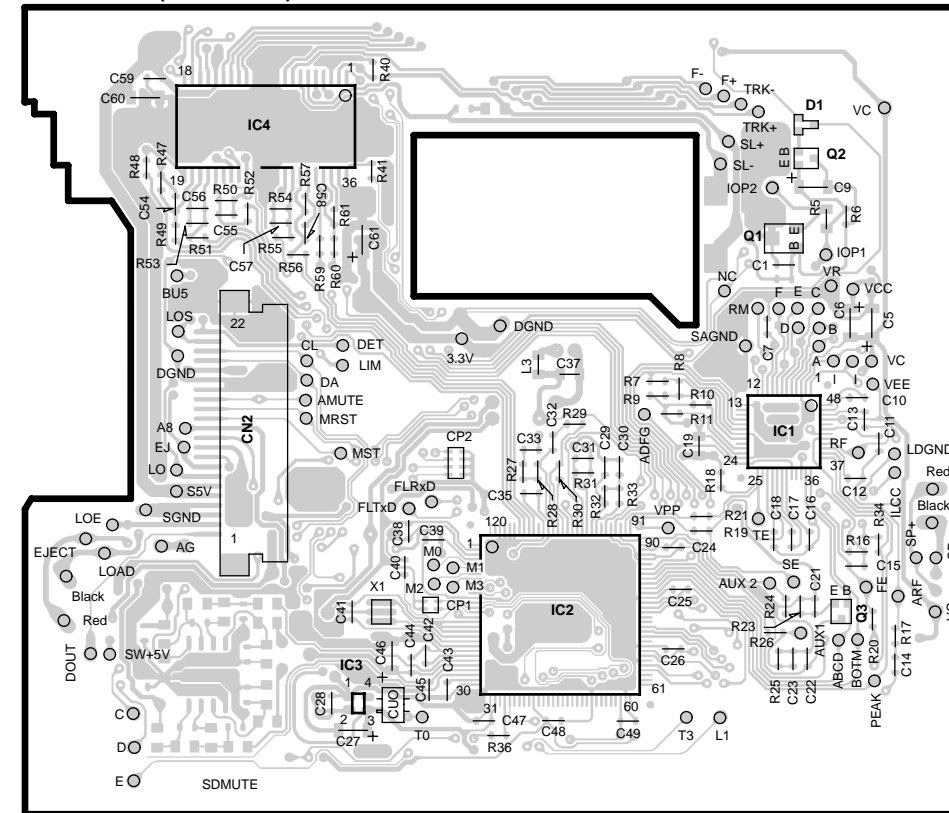
X33-3130-01 (J74-1203-02)



(X33-3130-01)

Ref. No.	Address
IC6	2AK
IC7	2AL
IC8	2AK
IC9	2AJ
Q4	3AK
Q5	2AK
Q6	2AK
Q7	2AK

X33-3130-01 (J74-1203-02)

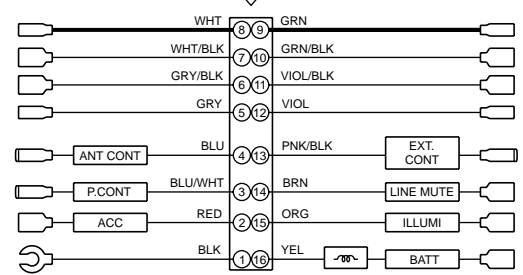


(Foil side view)

(X33-3130-01)

Ref. No.	Address
IC1	6AL
IC2	6AL
IC3	6AK
IC4	5AK
Q1	5AL
Q2	5AM
Q3	6AM

Refer to the schematic diagram for the values of resistors and capacitors.



- (X14-6700-XX) (A/2)
- IC1 : M30624MGA46FP
  - IC2 : TDA7501
  - IC4 : L4943
  - IC6 : TA8273H
  - IC7 : LM2596S-ADJ
  - IC8 : TDA7500
  - IC9,12 : NJM4565M-TE2
  - IC10,11 : NJM2068MD
  - IC14 : SI-3033CA
  - IC15 : PST9142NR
  - IC16 : TC7W02FU
  - IC17 : BA6219BFP-Y
  - IC18 : L88M05T
  - IC19 : IS63LV1024-15J

- Q1 : FMG1A
- Q2,3 : CPH3105
- Q7,705,707 : 2SC4081 or 2SD1819K
- Q202,203,302,303 : DTC143TK or UN2216
- Q402 : DTC114EUA or UN5211
- Q403,701,703,716,851 : DTC144EK or UN2213 or KRC104S
- Q601 : DTA124EK or UN2112 or KRA103S
- Q602 : DTC114YK or UN2214 or KRC107S
- Q603,604 : DTA114EK or UN2111 or KRA102S
- Q605,700,903,905,907 : FMC2A
- Q702 : FMW1
- Q704 : DTA723JK
- Q706 : 2SB1188(R)
- Q708,711,718 : 2SC2412K(S)
- Q709 : FMC3A
- Q710 : 2SB1548(P)
- Q715,720 : IMD16A
- Q717 : 2SB1184
- Q719 : 2SB1446

- D5 : HZM5.6N(B2)
- D205-208,305-308,706-708 : 1SR154-400
- D301,302,805 : HZM6.8WA or MA3068WA or ST26.8N
- D402,503 : HZM6.8N
- D403-406,504,601,602 : DAP202K or MA152WA
- D407 : HZ6C2L
- D501,603,604,712,715 : DAN217
- D502,505 : 02CZ3.6-Z
- D701 : RM10ZLF
- D702 : HZS7A3L
- D703 : 02CZ12-X
- D704 : 02CZ6.8-Y
- D705 : 02CZ6.2-X
- D709 : RB050L-40
- D713 : DA227
- D714 : DAN202K or MA152WK
- D717 : U1GWJ44
- D718 : 02CZ5.6-X
- D720 : 02CZ18-Y
- D801,802 : HZM6.8FA or FIZ6.8E
- D851 : 02CZ5.1-Y
- D852 : 02CZ7.5-X

- D717 : U1GWJ44
- D718 : 02CZ5.6-X
- D720 : 02CZ18-Y
- D801,802 : HZM6.8FA or FIZ6.8E
- D851 : 02CZ5.1-Y
- D852 : 02CZ7.5-X

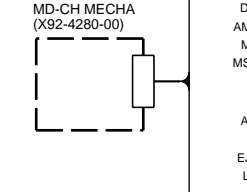
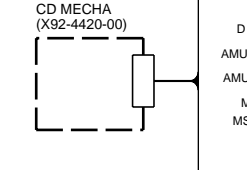
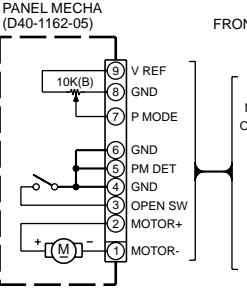
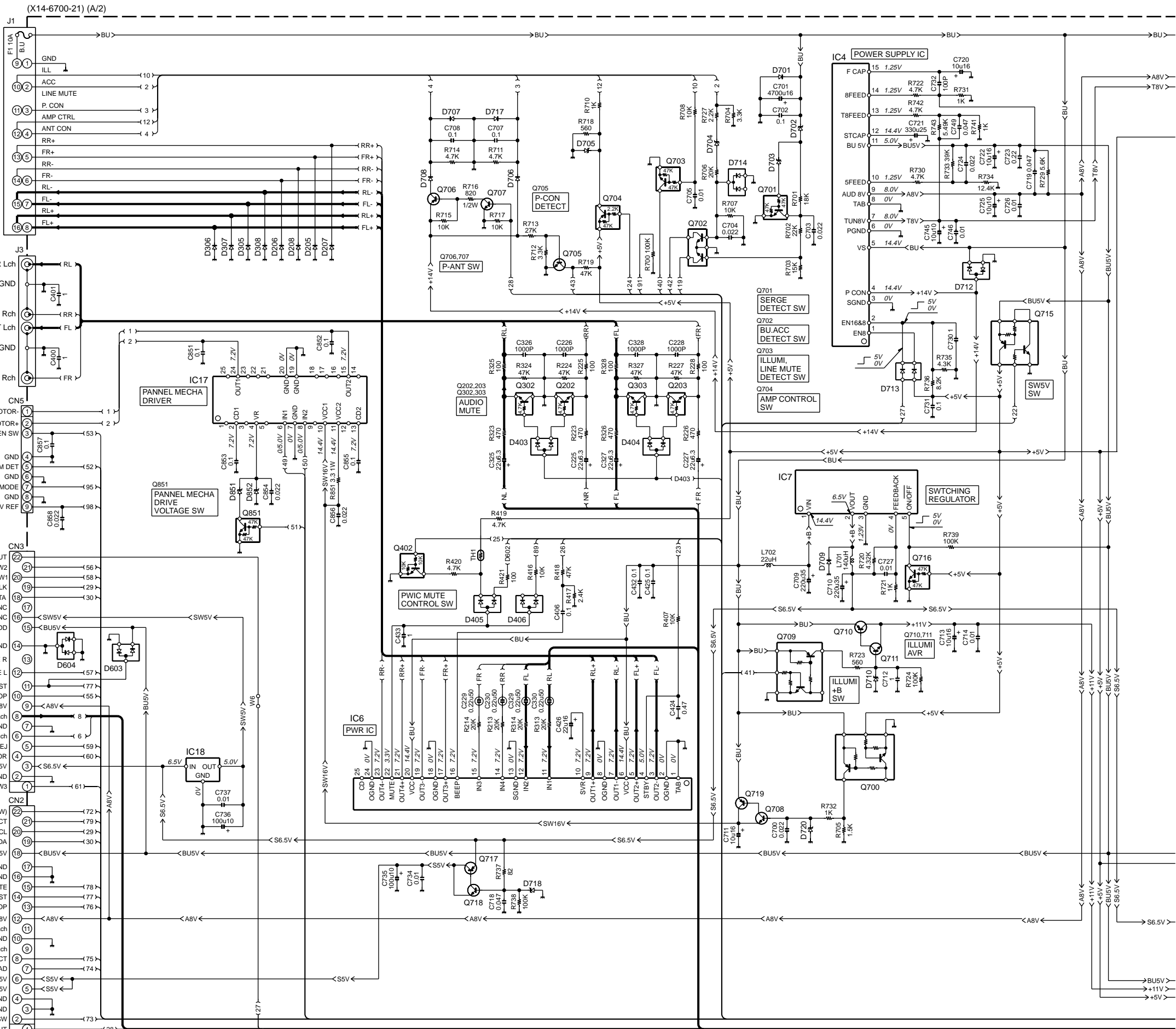
- D717 : U1GWJ44
- D718 : 02CZ5.6-X
- D720 : 02CZ18-Y
- D801,802 : HZM6.8FA or FIZ6.8E
- D851 : 02CZ5.1-Y
- D852 : 02CZ7.5-X

- D717 : U1GWJ44
- D718 : 02CZ5.6-X
- D720 : 02CZ18-Y
- D801,802 : HZM6.8FA or FIZ6.8E
- D851 : 02CZ5.1-Y
- D852 : 02CZ7.5-X

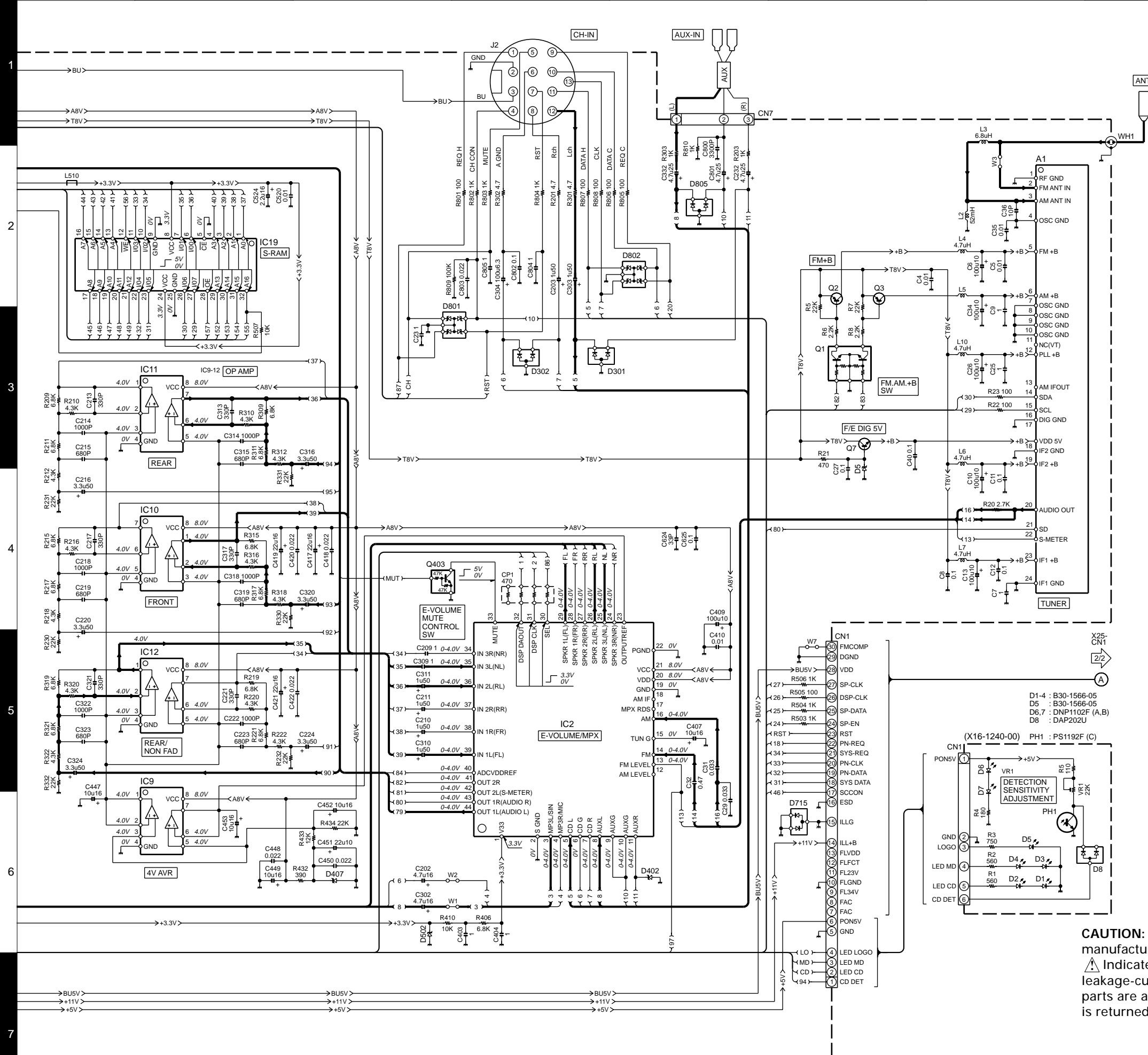
- D717 : U1GWJ44
- D718 : 02CZ5.6-X
- D720 : 02CZ18-Y
- D801,802 : HZM6.8FA or FIZ6.8E
- D851 : 02CZ5.1-Y
- D852 : 02CZ7.5-X

- D717 : U1GWJ44
- D718 : 02CZ5.6-X
- D720 : 02CZ18-Y
- D801,802 : HZM6.8FA or FIZ6.8E
- D851 : 02CZ5.1-Y
- D852 : 02CZ7.5-X

— SIGNAL LINE  
 <+B> +B LINE



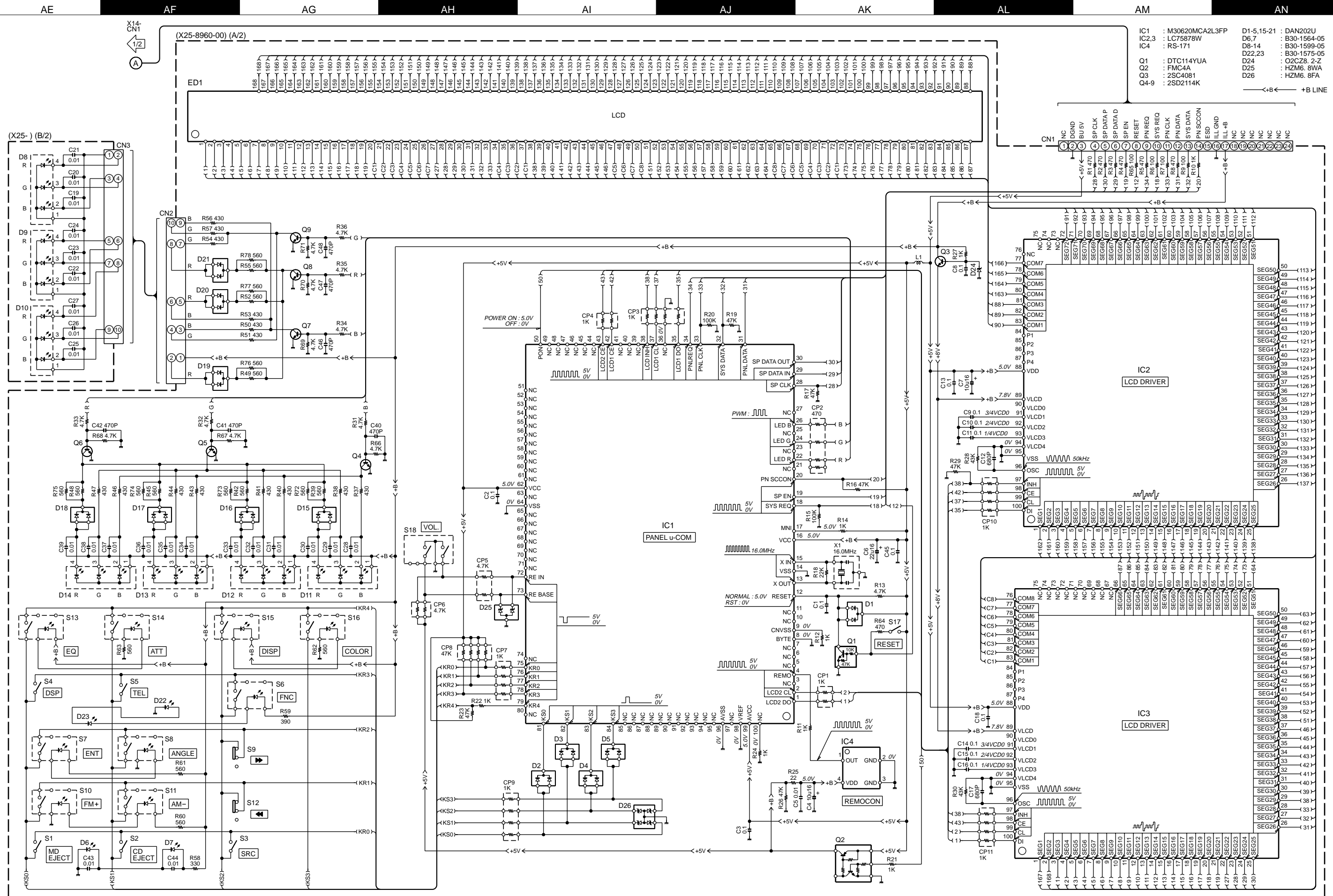




- |  |                        |  |
|--|------------------------|--|
| TC74HC157AF<br>  | PST9142NR<br>          | BA5917AFP<br>  |
| TC74HCT7007AF<br>                                      | DA227<br>              | PCM1716E<br>   |
| NJM2068MD<br>NJM2903M<br>NJM4565M-TE2<br>NJM5532MD<br> | IMD16A<br>             | CXA2523AR<br>  |
| TA78L05F<br>   | FMG1A<br>              | 02CZ12-X 02CZ6.2-X<br>02CZ18-Y 02CZ6.8-Y<br>02CZ3.6-Z 02CZ7.5-X<br>02CZ5.1-Y 02CZ8.2-Z<br>   |
| DAN202K<br>DAN202U<br>                                 | DAP202K<br>DAP202U<br> | DTA114EUA DTC143EUA<br>DTC114EUA KRA102S<br>DTC124EUA KRC104S<br>  |
| 2SB1548<br>  | 2SB1188<br>            | DTA114EK DTC143TK 2SB1295<br>DTA123JK DTC144EK 2SC2412K<br>DTA124EK UN5211 2SC4116<br>DTC114YK 2SA1362 2SD1819A<br>DTC114YUA 2SA1576A 2SD2114K<br> |
| 2SC4081<br>  | 2SB1184<br>            |  |

•DC voltages are as measured with a high impedance voltmeter. Values may vary slightly due to variations between individual instruments or/and units.

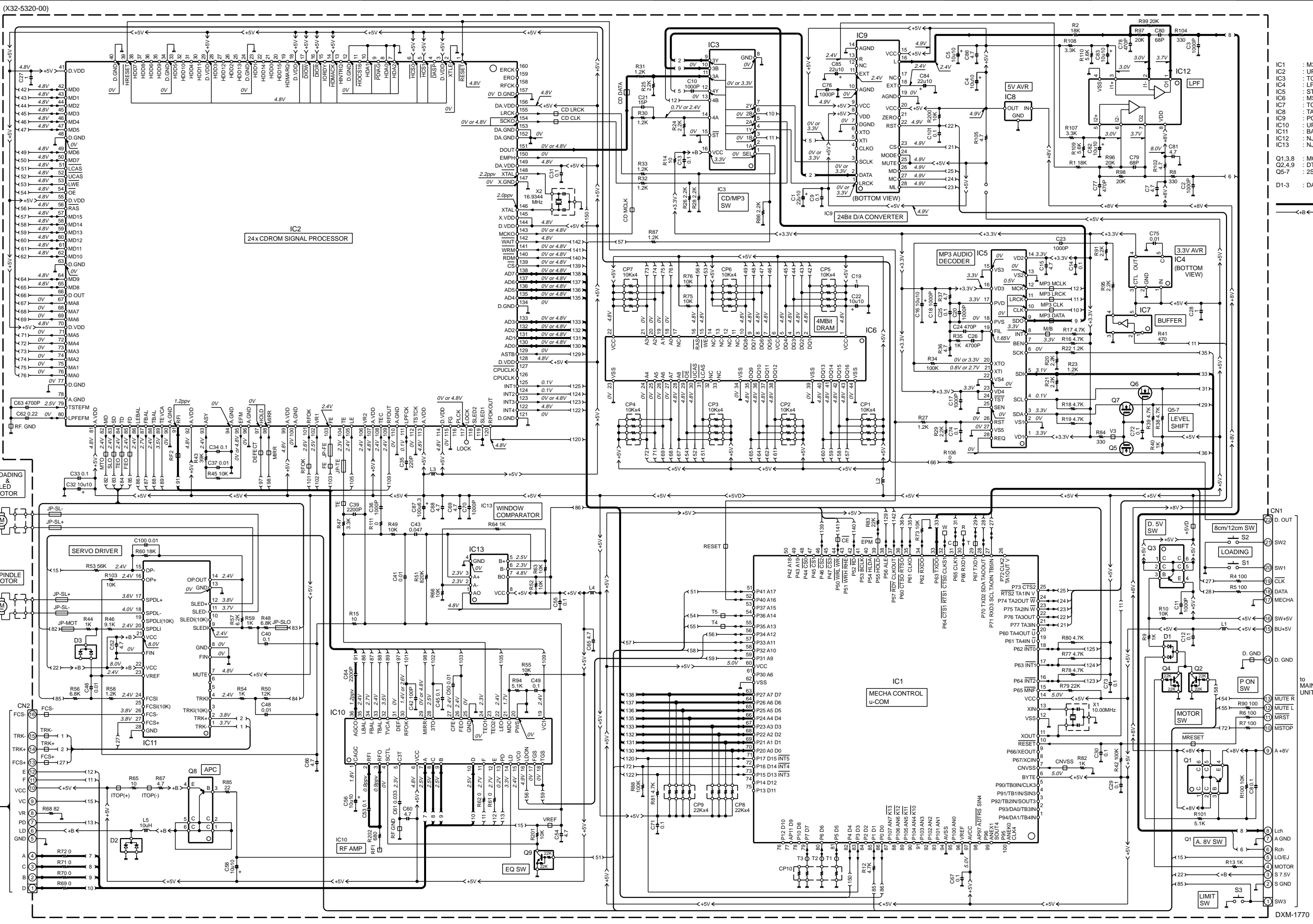
**CAUTION:** For continued safety, replace safety critical components only with manufacturer's recommended parts (refer to parts list).  
 ⚠ Indicates safety critical components. To reduce the risk of electric shock, leakage-current or resistance measurements shall be carried out (exposed parts are acceptably insulated from the supply circuit) before the appliance is returned to the customer.



**CAUTION:** For continued safety, replace safety critical components only with manufacturer's recommended parts (refer to parts list). ⚠ Indicates safety critical components. To reduce the risk of electric shock, leakage-current or resistance measurements shall be carried out (exposed parts are acceptably insulated from the supply circuit) before the appliance is returned to the customer.

•DC voltages are as measured with a high impedance voltmeter. Values may vary slightly due to variations between individual instruments or/and units.





- IC1 : M30624MCA60GP
- IC2 : UPD63724B
- IC3 : TC74HC157AF
- IC4 : LP2982-3.3
- IC5 : STA013
- IC6 : MSM514260CP-60
- IC7 : TC75H04F
- IC8 : TA78L05F
- IC9 : PCM1716
- IC10 : UPC2575GS
- IC11 : BA5917AFP
- IC12 : NJM5532MD
- IC13 : NJM2903M

- Q1,3,8 : MCH6101
- Q2,4,9 : DTC124EUA
- Q5-7 : 2SK3018

D1-3 : DAN202U

→ SIGNAL LINE  
← +B ← +B LINE

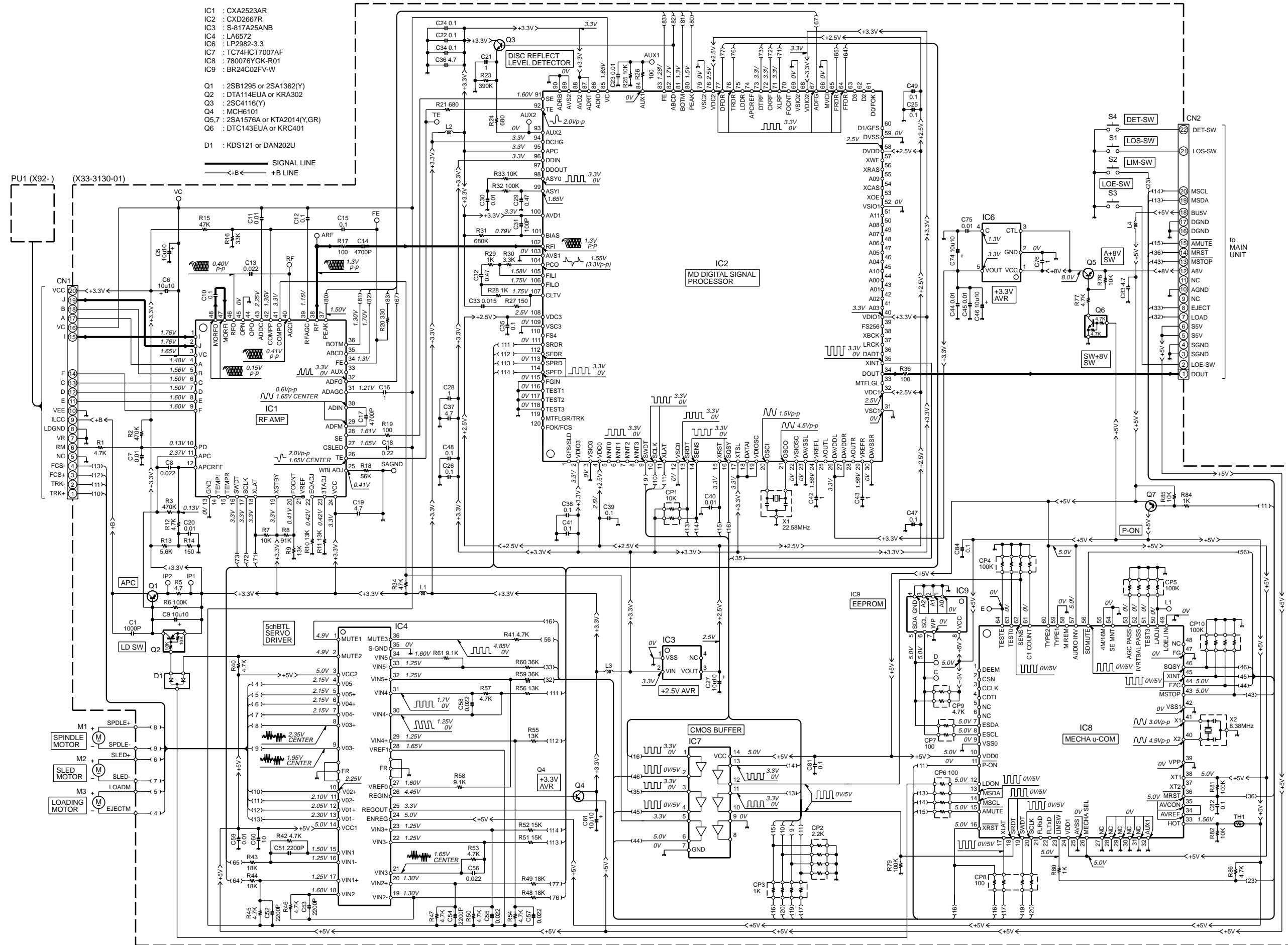
DXM-1770

**CAUTION:** For continued safety, replace safety critical components only with manufacturer's recommended parts (refer to parts list). ⚠ Indicates safety critical components. To reduce the risk of electric shock, leakage-current or resistance measurements shall be carried out (exposed parts are acceptably insulated from the supply circuit) before the appliance is returned to the customer.

•DC voltages are as measured with a high impedance voltmeter. Values may vary slightly due to variations between individual instruments or/and units.

**DPX-8020MD**  
**KENWOOD**

1  
2  
3  
4  
5  
6  
7



- IC1 : CXA2523AR  
 IC2 : CXD2667R  
 IC3 : S-817A25ANB  
 IC4 : LA6572  
 IC6 : LP2982-3.3  
 IC7 : TC74HCT7007AF  
 IC8 : 780076VGK-R01  
 IC9 : BR24C02-FV-W
- Q1 : 2SB1295 or 2SA1362(Y)  
 Q2 : DTA114EUA or KRA302  
 Q3 : 2SC4116(Y)  
 Q4 : MCH6101  
 Q5,7 : 2SA1576A or KTA2014(Y,GR)  
 Q6 : DTC143EUA or KRC401
- D1 : KDS121 or DAN202U

— SIGNAL LINE  
 — +B LINE

PU1 (X92-)  
 (X33-3130-01)

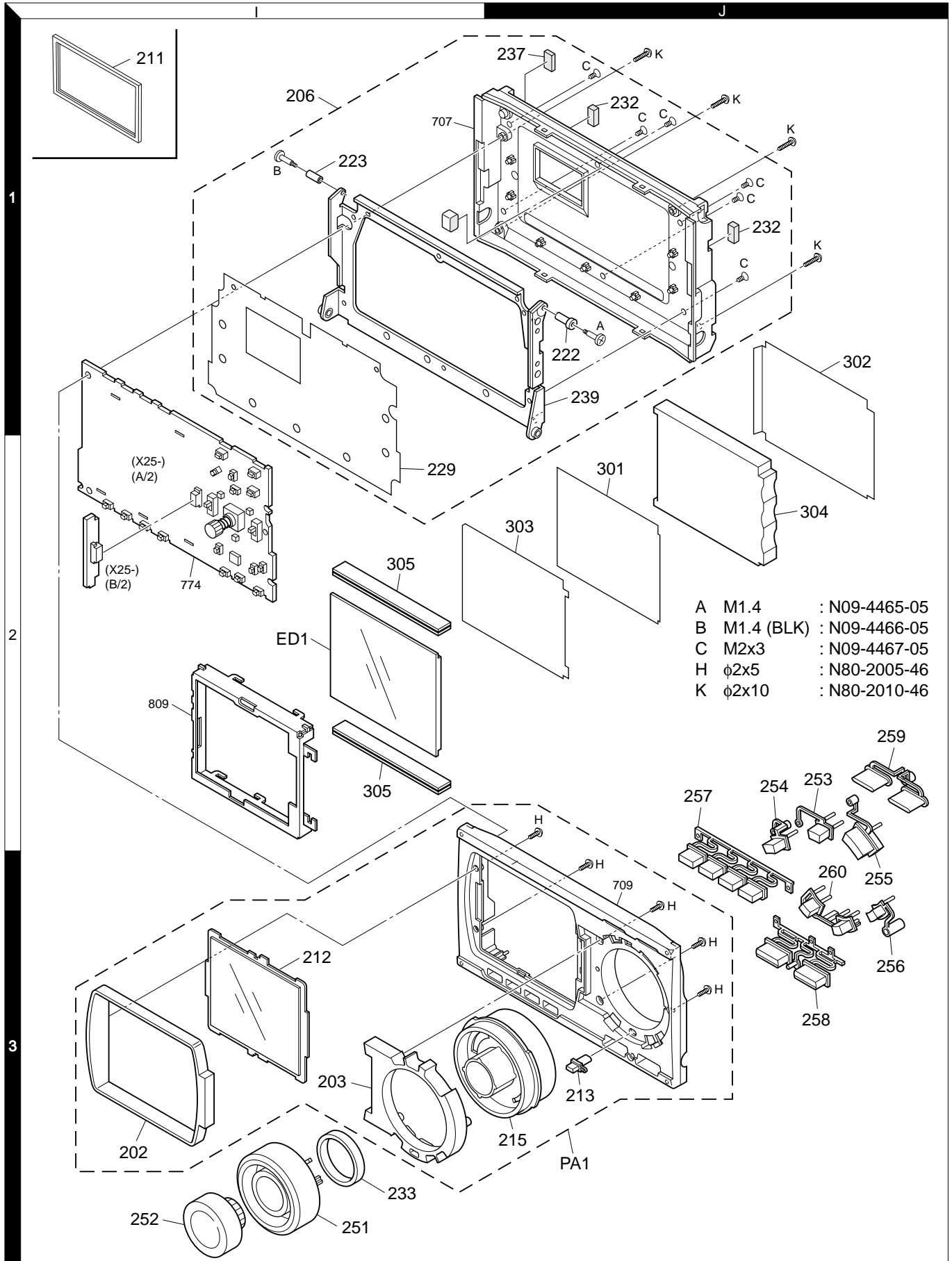
MDS-2600

**CAUTION:** For continued safety, replace safety critical components only with manufacturer's recommended parts (refer to parts list). ⚠ Indicates safety critical components. To reduce the risk of electric shock, leakage-current or resistance measurements shall be carried out (exposed parts are acceptably insulated from the supply circuit) before the appliance is returned to the customer.

•DC voltages are as measured with a high impedance voltmeter. Values may vary slightly due to variations between individual instruments or/and units.

**DPX-8020MD**  
**KENWOOD**

## EXPLODED VIEW (UNIT)



Parts with exploded view numbers larger than 700 are not supplied.

# DPX-8020MD

## PARTS LIST

\*New Parts

Parts without **Parts No.** are not supplied.

Les articles non mentionnes dans le **Parts No.** ne sont pas fournis.

Teile ohne **Parts No.** werden nicht geliefert.

Ref. No.	A d d	N e w	Parts No.	Description	Des- tina- tion
<b>DPX-8020MD</b>					
202	3I	*	A21-4108-02	DRESSING PANEL	
203	3I	*	A21-4109-02	DRESSING PANEL	
205	2G	*	A22-2905-03	SUB PANEL ASSY	
206	1I	*	A46-1730-02	REAR COVER ASSY	
208	1G		A52-0794-02	TOP PLATE	
PA1	3J	*	A64-2463-02	PANEL ASSY	
RM1	1H		A70-2006-05	REMOTE CONTROLLER ASSY	
210	3G	*	B03-3100-03	DRESSING PLATE	
211	1I	*	B07-3046-04	ESCUTCHEON ASSY	
212	3I	*	B10-4072-03	FRONT GLASS	
213	3J	*	B10-4073-04	FRONT GLASS	
215	3J	*	B19-2096-03	LIGHTING BOARD	
-			B46-0100-50	WARRANTY CARD	
-			B54-4322-00	INSTALLATION MANUAL	
-		*	B64-2053-00	INSTRUCTION MANUAL	E
-		*	B64-2054-00	INSTRUCTION MANUAL	T,K
222	1J	*	D14-0761-04	ROLLER	
223	1I	*	D14-0762-04	ROLLER	
PME	3H	*	D40-1162-05	MECHANISM ASSY	
AC1	2H		E30-4965-05	AUDIO CORD	
DC1	1H		E30-4975-05	DC CORD	
FC1	1G		E39-0422-05	FLAT CABLE	
FC2	1G		E39-0423-05	FLAT CABLE	
229	2I		F12-0743-03	SHIELDING SHEET	
230	2H		F29-0049-05	INSULATING COVER	
F1	2H		F52-0011-05	FUSE(MINI BLADE TYPE)	
231	2H		G11-1946-04	CUSHION	
232	1J		G11-1945-04	CUSHION	
233	3I		G11-1972-04	CUSHION	
234	3G		G11-1949-04	CUSHION	
235	3H		G11-1959-04	CUSHION	
237	1J		G11-1947-04	CUSHION	
-			H10-4789-02	POLYSTYRENE FOAMED FIXTURE	
-			H11-1525-04	POLYSTYRENE FOAMED BOARD	
-			H12-2694-03	PACKING FIXTURE	
-			H13-2009-04	CARTON BOARD	
-			H25-0337-04	PROTECTION BAG (180X300X0.03)	
-			H25-1164-04	PROTECTION BAG (0.5X350X480)	
-			H25-1170-04	PROTECTION BAG	
-		*	H54-2166-03	ITEM CARTON CASE	
239	1J	*	J21-9742-03	MOUNTING HARDWARE ASSY	
241	3G	*	J31-1050-04	COLLAR	
243	3G	*	J90-1012-01	RAIL	
244	3G	*	J90-1013-01	RAIL	
FPC1	3G	*	J84-0132-05	FLEXIBLE PRINTED WIRING BOARD	
251	3I	*	K24-3734-03	KNOB SEEK	
252	3I	*	K24-3735-03	KNOB VOL	
253	2J	*	K24-3736-04	KNOB FM	
254	2J	*	K24-3737-04	KNOB AM	
255	3J	*	K24-3738-04	KNOB SRC	

Ref. No.	A d d	N e w	Parts No.	Description	Des- tina- tion
256	3J	*	K24-3739-04	KNOB ANG	
257	2J	*	K25-1312-03	KNOB EQ	
258	3J	*	K25-1368-03	KNOB DSP	
259	2J	*	K25-1314-03	KNOB EJ	
260	3J	*	K25-1315-03	KNOB PLAY	
270	1H		N99-1701-05	SCREW SET	
A	1J		N09-4465-05	STEPPED SCREW	
B	1J		N09-4466-05	STEPPED SCREW	
C	1J		N09-4467-05	MACHINE SCREW	
D	2G		N09-4468-05	SEMS (TAPTITE SCREW)(2X5)	
E	3G		N09-4469-05	MACHINE SCREW(M2.6X3.5)	
F	3G		N09-4480-05	STEPPED SCREW	
G	2G		N30-3014-46	PAN HEAD MACHINE SCREW	
H	3J		N80-2005-46	PAN HEAD TAPTITE SCREW	
K	1J		N80-2010-46	PAN HEAD TAPTITE SCREW	
L	2H		N80-3010-46	PAN HEAD TAPTITE SCREW	
M	2G		N83-3005-46	PAN HEAD TAPTITE SCREW	
DME	1G		X92-4420-00	MECHANISM ASSY	
MME	1H		X92-4280-00	MECHANISM ASSY	
<b>SYNTHESIZER UNIT (X14-6700-21)</b>					
C4 ,5			CK73GB1H103K	CHIP C 0.010UF	K
C6			CE04DW1A101M	ELECTRO 100UF	10WV
C7			CK73FB1C105K	CHIP C 1.0UF	K
C8			CK73GB1C104K	CHIP C 0.10UF	K
C9			CK73FB1C105K	CHIP C 1.0UF	K
C10			CE04DW1A101M	ELECTRO 100UF	10WV
C11 ,12			CK73GB1C104K	CHIP C 0.10UF	K
C13			CE04DW1A101M	ELECTRO 100UF	10WV
C23			CK73FB1C105K	CHIP C 1.0UF	K
C25			CK73FB1C105K	CHIP C 1.0UF	K
C26			CE04DW1A101M	ELECTRO 100UF	10WV
C27			CK73GB1C104K	CHIP C 0.10UF	K
C29			CK73GB1E333K	CHIP C 0.033UF	K
C31			CK73GB1E333K	CHIP C 0.033UF	K
C32			CK73FB1C474K	CHIP C 0.47UF	K
C34			CE04DW1A101M	ELECTRO 100UF	10WV
C36			CC73GCH1H100D	CHIP C 10PF	D
C40			CK73GB1C104K	CHIP C 0.10UF	K
C202			CE04NW1E4R7M	ELECTRO 4.7UF	25WV
C203			CE04NW1H010M	ELECTRO 1.0UF	50WV
C209			CK73FB1C105K	CHIP C 1.0UF	K
C210			C90-2558-05	ELECTRO 1.0UF	50WV
C211			C92-0686-05	ELECTRO 1UF	50WV
C213			CC73GCH1H331J	CHIP C 330PF	J
C213			CK73GB1H331K	CHIP C 330PF	K
C214			CK73GB1H102K	CHIP C 1000PF	K
C215			CC73GCH1H681J	CHIP C 680PF	J
C215			CK73GB1H681K	CHIP C 680PF	K
C216			CE04NW1H3R3M	ELECTRO 3.3UF	50WV
C217			CC73GCH1H331J	CHIP C 330PF	J
C217			CK73GB1H331K	CHIP C 330PF	K
C218			CK73GB1H102K	CHIP C 1000PF	K
C219			CC73GCH1H681J	CHIP C 680PF	J
C219			CK73GB1H681K	CHIP C 680PF	K

⚠ indicates safety critical components.

## PARTS LIST

\*New Parts

Parts without **Parts No.** are not supplied.

Les articles non mentionnes dans le **Parts No.** ne sont pas fournis.

Teile ohne **Parts No.** werden nicht geliefert.

(X14-6700-21)

Ref. No.	A d d	N e w	Parts No.	Description	Des- tina- tion	Ref. No.	A d d	N e w	Parts No.	Description	Des- tina- tion
C220			C90-2556-05	ELECTRO 3.3UF 50WV		C424			CK73FB1C474K	CHIP C 0.47UF K	
C221			CC73GCH1H331J	CHIP C 330PF J		C425			CK73FB1H104K	CHIP C 0.10UF K	
C221			CK73GB1H331K	CHIP C 330PF K		C426			C90-2680-05	ELECTRO 22UF 16WV	
C222			CK73GB1H102K	CHIP C 1000PF K		C432			CK73FB1H104K	CHIP C 0.10UF K	
C223			CC73GCH1H681J	CHIP C 680PF J		C433			CK73FB1C105K	CHIP C 1.0UF K	
C223			CK73GB1H681K	CHIP C 680PF K		C447			CE04NW1C100M	ELECTRO 10UF 16WV	
C224			CE04NW1H3R3M	ELECTRO 3.3UF 50WV		C448			CK73GB1E223K	CHIP C 0.022UF K	
C225			CE04NW0J220M	ELECTRO 22UF 6.3WV		C449			CE04NW1C100M	ELECTRO 10UF 16WV	
C226			CK73GB1H102K	CHIP C 1000PF K		C450			CK73GB1E223K	CHIP C 0.022UF K	
C227			CE04NW0J220M	ELECTRO 22UF 6.3WV		C451			CE04NW1A220M	ELECTRO 22UF 10WV	
C228			CK73GB1H102K	CHIP C 1000PF K		C452,453			CE04NW1C100M	ELECTRO 10UF 16WV	
C229,230			C90-5297-05	NP-ELECT 0.22UF 50WV		C501			C90-2671-05	ELECTRO 47UF 10WV	
C232			CE04NW1E4R7M	ELECTRO 4.7UF 25WV		C502-504			CK73GB1C104K	CHIP C 0.10UF K	
C302			CE04NW1E4R7M	ELECTRO 4.7UF 25WV		C505,506			CC73GCH1H080D	CHIP C 8.0PF D	
C303			CE04NW1H010M	ELECTRO 1.0UF 50WV		C507			CK73GB1C104K	CHIP C 0.10UF K	
C304			CE04NW0J101M	ELECTRO 100UF 6.3WV		C508,509			C92-1358-05	CHIP-TAN 2.2UF 16WV	
C309			CK73FB1C105K	CHIP C 1.0UF K		C510,511			CK73GB1H222K	CHIP C 2200PF K	
C310			C90-2558-05	ELECTRO 1.0UF 50WV		C512,513			CC73GCH1H331J	CHIP C 330PF J	
C311			C92-0686-05	ELECTRO 1UF 50WV		C512,513			CK73GB1H331K	CHIP C 330PF K	
C313			CC73GCH1H331J	CHIP C 330PF J		C514			C90-2671-05	ELECTRO 47UF 10WV	
C313			CK73GB1H331K	CHIP C 330PF K		C515,516			CE04NW0J470M	ELECTRO 47UF 6.3WV	
C314			CK73GB1H102K	CHIP C 1000PF K		C517			C90-2671-05	ELECTRO 47UF 10WV	
C315			CC73GCH1H681J	CHIP C 680PF J		C518			CK73GB1C104K	CHIP C 0.10UF K	
C315			CK73GB1H681K	CHIP C 680PF K		C519			C90-5394-05	ALMINIUM ELECTROLYTIC C.	
C316			CE04NW1H3R3M	ELECTRO 3.3UF 50WV		C520			CK73GB1H103K	CHIP C 0.010UF K	
C317			CC73GCH1H331J	CHIP C 330PF J		C521			C90-5389-05	ALMINIUM ELECTROLYTIC C.	
C317			CK73GB1H331K	CHIP C 330PF K		C523			CK73GB1A334K	CHIP C 0.33UF K	
C318			CK73GB1H102K	CHIP C 1000PF K		C524			C92-1358-05	CHIP-TAN 2.2UF 16WV	
C319			CC73GCH1H681J	CHIP C 680PF J		C525			CK73EB1C225K	CHIP C 2.2UF K	
C319			CK73GB1H681K	CHIP C 680PF K		C526			CK73GB1E223K	CHIP C 0.022UF K	
C320			C90-2556-05	ELECTRO 3.3UF 50WV		C527,528			CK73GB1H103K	CHIP C 0.010UF K	
C321			CC73GCH1H331J	CHIP C 330PF J		C529			CC73GCH1H471J	CHIP C 470PF J	
C321			CK73GB1H331K	CHIP C 330PF K		C603			CK73GB1E223K	CHIP C 0.022UF K	
C322			CK73GB1H102K	CHIP C 1000PF K		C604			CE04DW1A101M	ELECTRO 100UF 10WV	
C323			CC73GCH1H681J	CHIP C 680PF J		C605,606			CK73GB1C104K	CHIP C 0.10UF K	
C323			CK73GB1H681K	CHIP C 680PF K		C607,608			CC73GCH1H100D	CHIP C 10PF D	
C324			CE04NW1H3R3M	ELECTRO 3.3UF 50WV		C609,610			CK73GB1H103K	CHIP C 0.010UF K	
C325			CE04NW0J220M	ELECTRO 22UF 6.3WV		C612			CC73GCH1H101J	CHIP C 100PF J	
C326			CK73GB1H102K	CHIP C 1000PF K		C613			CK73GB1H472K	CHIP C 4700PF K	
C327			CE04NW0J220M	ELECTRO 22UF 6.3WV		C614			CK73GB1H103K	CHIP C 0.010UF K	
C328			CK73GB1H102K	CHIP C 1000PF K		C616,617			CK73GB1H103K	CHIP C 0.010UF K	
C329,330			C90-5297-05	NP-ELECT 0.22UF 50WV		C619-621			CK73GB1H103K	CHIP C 0.010UF K	
C332			CE04NW1E4R7M	ELECTRO 4.7UF 25WV		C622			CK73GB1H472K	CHIP C 4700PF K	
C400,401			CK73FB1C105K	CHIP C 1.0UF K		C624			CC73GCH1H330J	CHIP C 33PF J	
C403,404			CK73FB1C105K	CHIP C 1.0UF K		C625			CK73GB1C104K	CHIP C 0.10UF K	
C406			CK73GB1C104K	CHIP C 0.10UF K		C700			CK73GB1E223K	CHIP C 0.022UF K	
C407			C92-0671-05	ELECTRO 10UF 16WV		C701			C90-5393-05	ALMINIUM ELECTROLYTIC C.	
C409			CE04DW1A101M	ELECTRO 100UF 10WV		C702			CK73FB1H104K	CHIP C 0.10UF K	
C410			CK73GB1H103K	CHIP C 0.010UF K		C703,704			CK73GB1E223K	CHIP C 0.022UF K	
C417			CE04NW1C220M	ELECTRO 22UF 16WV		C705			CK73GB1H103K	CHIP C 0.010UF K	
C418			CK73GB1E223K	CHIP C 0.022UF K		C707,708			CK73FB1H104K	CHIP C 0.10UF K	
C419			CE04NW1C220M	ELECTRO 22UF 16WV		C709,710			C90-5389-05	ALMINIUM ELECTROLYTIC C.	
C420			CK73GB1E223K	CHIP C 0.022UF K		C711			CE04DW1C100M	ELECTRO 10UF 16WV	
C421			CE04NW1C220M	ELECTRO 22UF 16WV		C712			CK73FB1C105K	CHIP C 1.0UF K	
C422			CK73GB1E223K	CHIP C 0.022UF K		C713			CE04NW1C100M	ELECTRO 10UF 16WV	

⚠ indicates safety critical components.

## PARTS LIST

\*New Parts

Parts without **Parts No.** are not supplied.

Les articles non mentionnés dans le **Parts No.** ne sont pas fournis.

Teile ohne **Parts No.** werden nicht geliefert.

(X14-6700-21)

Ref. No.	Added	New	Parts No.	Description	Destination
C714			CK73GB1H103K	CHIP C 0.010UF K	
C718,719			CK73GB1E473K	CHIP C 0.047UF K	
C720			C90-2759-05	ELECTRO 10UF 16WV	
C721			C90-2695-05	ELECTRO 330UF 25WV	
C722			C90-2554-05	ELECTRO 10UF 16WV	
C723			CK73FB1C224K	CHIP C 0.22UF K	
C724			CK73GB1E223K	CHIP C 0.022UF K	
C725			C90-2528-05	ELECTRO 10UF 10WV	
C726,727			CK73GB1H103K	CHIP C 0.010UF K	
C730			CK73FB1C105K	CHIP C 1.0UF K	
C731			CK73GB1C104K	CHIP C 0.10UF K	
C732			CC73GCH1H101J	CHIP C 100PF J	
C734			CK73GB1H103K	CHIP C 0.010UF K	
C735,736			CE04DW1A101M	ELECTRO 100UF 10WV	
C737			CK73GB1H103K	CHIP C 0.010UF K	
C745			C90-2528-05	ELECTRO 10UF 10WV	
C746			CK73GB1H103K	CHIP C 0.010UF K	
C749			CK73GB1E473K	CHIP C 0.047UF K	
C800			CK73GB1H332K	CHIP C 3300PF K	
C801			CE04NW1E4R7M	ELECTRO 4.7UF 25WV	
C802			CK73FB1H104K	CHIP C 0.10UF K	
C803			CK73GB1E223K	CHIP C 0.022UF K	
C804,805			CK73FB1C105K	CHIP C 1.0UF K	
C851-853			CK73FB1H104K	CHIP C 0.10UF K	
C854			CK73GB1E223K	CHIP C 0.022UF K	
C855			CK73FB1H104K	CHIP C 0.10UF K	
C856			CK73GB1E223K	CHIP C 0.022UF K	
C857			CK73FB1H104K	CHIP C 0.10UF K	
C858			CK73GB1E223K	CHIP C 0.022UF K	
CN1			E40-9373-05	FLAT CABLE CONNECTOR	
CN2,3			E40-9735-15	FLAT CABLE CONNECTOR	
CN5			E40-5186-05	PIN ASSY	
CN7			E40-3261-05	PIN ASSY	
△ J1			E58-0836-05	RECTANGULAR RCONNECTORE	
J2			E56-0834-05	CYLINDRICAL RCONNECTORE	
J3			E63-0853-05	PIN JACK	
WH1			E30-4653-15	CORD WITH PLUG	
L2			L33-1123-05	LINE FILTER COIL	
L3			L33-1816-05	SMALL FIXED INDUCTOR	
L4			L40-4795-34	SMALL FIXED INDUCTOR	
L4			L40-4795-68	SMALL FIXED INDUCTOR(4.7UH)	
L5			L40-1005-34	SMALL FIXED INDUCTOR	
L6,7			L40-4795-34	SMALL FIXED INDUCTOR	
L6,7			L40-4795-68	SMALL FIXED INDUCTOR(4.7UH)	
L10			L40-4795-34	SMALL FIXED INDUCTOR	
L10			L40-4795-68	SMALL FIXED INDUCTOR(4.7UH)	
L501			L92-0308-05	FERRITE CORE	
L503-505			L92-0308-05	FERRITE CORE	
L507,508			L92-0308-05	FERRITE CORE	
L510			L92-0308-05	FERRITE CORE	
L601			L40-4795-34	SMALL FIXED INDUCTOR	
L601			L40-4795-68	SMALL FIXED INDUCTOR(4.7UH)	
L701			L33-1806-05	LINE FILTER COIL	
L702			L33-1029-05	SMALL FIXED INDUCTOR	

Ref. No.	Added	New	Parts No.	Description	Destination
X1			L77-2744-05	CRYSTAL RESONATOR(12.5MHZ)	
X2			L77-2715-05	CRYSTAL RESONATOR	
CP1			R90-1016-05	MULTI-COMP 470 X4	
CP51,52			R90-1016-05	MULTI-COMP 470 X4	
CP62			R90-1016-05	MULTI-COMP 470 X4	
CP63,64			R90-0722-05	MULTI-COMP 2.2K X4	
CP66-69			R90-0722-05	MULTI-COMP 2.2K X4	
CP71			R90-0722-05	MULTI-COMP 2.2K X4	
CP72			R90-1013-05	MULTI-COMP 2.2K X2	
CP73,74			R90-0722-05	MULTI-COMP 2.2K X4	
CP76			R90-0722-05	MULTI-COMP 2.2K X4	
CP77			R90-1019-05	MULTI-COMP 100 X2	
R5			RK73GB1J223J	CHIP R 22K J 1/16W	
R6			RK73FB2A222J	CHIP R 2.2K J 1/10W	
R7			RK73GB1J223J	CHIP R 22K J 1/16W	
R8			RK73FB2A222J	CHIP R 2.2K J 1/10W	
R20			RK73FB2A272J	CHIP R 2.7K J 1/10W	
R21			RK73GB1J471J	CHIP R 470 J 1/16W	
R22,23			RK73GB1J101J	CHIP R 100 J 1/16W	
R201			RK73EB2B4R7J	CHIP R 4.7 J 1/8W	
R203			RK73EB2B102J	CHIP R 1.0K J 1/8W	
R209			RK73GB1J682J	CHIP R 6.8K J 1/16W	
R210			RK73GB1J432J	CHIP R 4.3K J 1/16W	
R211			RK73GB1J682J	CHIP R 6.8K J 1/16W	
R212			RK73GB1J432J	CHIP R 4.3K J 1/16W	
R213,214			RK73GB1J203J	CHIP R 20K J 1/16W	
R215			RK73GB1J682J	CHIP R 6.8K J 1/16W	
R216			RK73GB1J432J	CHIP R 4.3K J 1/16W	
R217			RK73GB1J682J	CHIP R 6.8K J 1/16W	
R218			RK73GB1J432J	CHIP R 4.3K J 1/16W	
R219			RK73GB1J682J	CHIP R 6.8K J 1/16W	
R220			RK73GB1J432J	CHIP R 4.3K J 1/16W	
R221			RK73GB1J682J	CHIP R 6.8K J 1/16W	
R222			RK73GB1J432J	CHIP R 4.3K J 1/16W	
R223			RK73FB2A471J	CHIP R 470 J 1/10W	
R224			RK73FB2A473J	CHIP R 47K J 1/10W	
R225			RK73FB2A101J	CHIP R 100 J 1/10W	
R226			RK73FB2A471J	CHIP R 470 J 1/10W	
R227			RK73FB2A473J	CHIP R 47K J 1/10W	
R228			RK73FB2A101J	CHIP R 100 J 1/10W	
R230			RK73FB2A223J	CHIP R 22K J 1/10W	
R231,232			RK73GB1J223J	CHIP R 22K J 1/16W	
R301,302			RK73EB2B4R7J	CHIP R 4.7 J 1/8W	
R303			RK73EB2B102J	CHIP R 1.0K J 1/8W	
R309			RK73GB1J682J	CHIP R 6.8K J 1/16W	
R310			RK73GB1J432J	CHIP R 4.3K J 1/16W	
R311			RK73GB1J682J	CHIP R 6.8K J 1/16W	
R312			RK73GB1J432J	CHIP R 4.3K J 1/16W	
R313,314			RK73GB1J203J	CHIP R 20K J 1/16W	
R315			RK73GB1J682J	CHIP R 6.8K J 1/16W	
R316			RK73GB1J432J	CHIP R 4.3K J 1/16W	
R317			RK73GB1J682J	CHIP R 6.8K J 1/16W	
R318			RK73GB1J432J	CHIP R 4.3K J 1/16W	
R319			RK73GB1J682J	CHIP R 6.8K J 1/16W	

## PARTS LIST

\*New Parts

Parts without **Parts No.** are not supplied.

Les articles non mentionnes dans le **Parts No.** ne sont pas fournis.

Teile ohne **Parts No.** werden nicht geliefert.

(X14-6700-21)

Ref. No.	A d d	N e w	Parts No.	Description	Des- tina- tion
R320			RK73GB1J432J	CHIP R 4.3K J 1/16W	
R321			RK73GB1J682J	CHIP R 6.8K J 1/16W	
R322			RK73GB1J432J	CHIP R 4.3K J 1/16W	
R323			RK73FB2A471J	CHIP R 470 J 1/10W	
R324			RK73FB2A473J	CHIP R 47K J 1/10W	
R325			RK73FB2A101J	CHIP R 100 J 1/10W	
R326			RK73FB2A471J	CHIP R 470 J 1/10W	
R327			RK73FB2A473J	CHIP R 47K J 1/10W	
R328			RK73FB2A101J	CHIP R 100 J 1/10W	
R330			RK73FB2A223J	CHIP R 22K J 1/10W	
R331,332			RK73GB1J223J	CHIP R 22K J 1/16W	
R406			RK73GB1J682J	CHIP R 6.8K J 1/16W	
R407			RK73GB1J103J	CHIP R 10K J 1/16W	
R410			RK73FB2A103J	CHIP R 10K J 1/10W	
R416			RK73GB1J103J	CHIP R 10K J 1/16W	
R417			RK73GB1J242J	CHIP R 2.4K J 1/16W	
R418			RK73GB1J473J	CHIP R 47K J 1/16W	
R419			RK73FB2A472J	CHIP R 4.7K J 1/10W	
R420			RK73GB1J472J	CHIP R 4.7K J 1/16W	
R421			RK73GB1J101J	CHIP R 100 J 1/16W	
R432			RK73GB1J391J	CHIP R 390 J 1/16W	
R433			RK73GB1J123J	CHIP R 12K J 1/16W	
R434			RK73GB1J223J	CHIP R 22K J 1/16W	
R500			RK73GB1J105J	CHIP R 1.0M J 1/16W	
R501			RK73GB1J471J	CHIP R 470 J 1/16W	
R502			RK73GB1J103J	CHIP R 10K J 1/16W	
R503			RK73EB2B102J	CHIP R 1.0K J 1/8W	
R504			RK73FB2A102J	CHIP R 1.0K J 1/10W	
R505			RK73FB2A101J	CHIP R 100 J 1/10W	
R506			RK73EB2B102J	CHIP R 1.0K J 1/8W	
R507			RK73GB1J103J	CHIP R 10K J 1/16W	
R508,509			RK73GB1J473J	CHIP R 47K J 1/16W	
R510			RK73GB1J221J	CHIP R 220 J 1/16W	
R512-515			RK73GB1J103J	CHIP R 10K J 1/16W	
R602			RK73GB1J104J	CHIP R 100K J 1/16W	
R603			RK73GB1J222J	CHIP R 2.2K J 1/16W	
R604			RK73GB1J332J	CHIP R 3.3K J 1/16W	
R605			RK73GB1J104J	CHIP R 100K J 1/16W	
R607			RK73GB1J102J	CHIP R 1.0K J 1/16W	
R608			RK73GB1J222J	CHIP R 2.2K J 1/16W	
R609			RK73GB1J223J	CHIP R 22K J 1/16W	
R610			RK73GB1J102J	CHIP R 1.0K J 1/16W	
R611			RK73GB1J104J	CHIP R 100K J 1/16W	
R612			RK73FB2A104J	CHIP R 100K J 1/10W	
R613			RK73GB1J101J	CHIP R 100 J 1/16W	
R614			RK73GB1J104J	CHIP R 100K J 1/16W	
R616,617			RK73GB1J101J	CHIP R 100 J 1/16W	
R618			RK73EB2B471J	CHIP R 470 J 1/8W	
R619,620			RK73EB2B101J	CHIP R 100 J 1/8W	
R621			RK73EB2B471J	CHIP R 470 J 1/8W	
R622			RK73FB2A222J	CHIP R 2.2K J 1/10W	
R623			RK73GB1J102J	CHIP R 1.0K J 1/16W	
R625			RK73FB2A471J	CHIP R 470 J 1/10W	
R626			RK73GB1J471J	CHIP R 470 J 1/16W	
R627			RK73GB1J102J	CHIP R 1.0K J 1/16W	

Ref. No.	A d d	N e w	Parts No.	Description	Des- tina- tion
R628			RK73GB1J222J	CHIP R 2.2K J 1/16W	
R630			RK73GB1J104J	CHIP R 100K J 1/16W	
R631			RK73GB1J102J	CHIP R 1.0K J 1/16W	
R632			RK73GB1J472J	CHIP R 4.7K J 1/16W	
R634			RK73GB1J101J	CHIP R 100 J 1/16W	
R635			RK73GB1J471J	CHIP R 470 J 1/16W	
R636			RK73GB1J104J	CHIP R 100K J 1/16W	
R637			RK73GB1J222J	CHIP R 2.2K J 1/16W	
R641			RK73GB1J104J	CHIP R 100K J 1/16W	
R642,643			RK73GB1J222J	CHIP R 2.2K J 1/16W	
R644			RK73GB1J104J	CHIP R 100K J 1/16W	
R646,647			RK73GB1J222J	CHIP R 2.2K J 1/16W	
R648			RK73GB1J104J	CHIP R 100K J 1/16W	
R649			RK73GB1J471J	CHIP R 470 J 1/16W	
R650			RK73GB1J104J	CHIP R 100K J 1/16W	
R651			RK73GB1J471J	CHIP R 470 J 1/16W	
R652			RK73GB1J104J	CHIP R 100K J 1/16W	
R653			RK73GB1J471J	CHIP R 470 J 1/16W	
R654-661			RK73GB1J104J	CHIP R 100K J 1/16W	
R663			RK73GB1J103J	CHIP R 10K J 1/16W	
R665			RK73GB1J104J	CHIP R 100K J 1/16W	
R666			RK73GB1J472J	CHIP R 4.7K J 1/16W	
R667-670			RK73GB1J101J	CHIP R 100 J 1/16W	
R671			RK73GB1J104J	CHIP R 100K J 1/16W	
R673,674			RK73GB1J104J	CHIP R 100K J 1/16W	
R675			RK73GB1J471J	CHIP R 470 J 1/16W	
R676			RK73GB1J104J	CHIP R 100K J 1/16W	
R677			RK73GB1J471J	CHIP R 470 J 1/16W	
R681			RK73GB1J473J	CHIP R 47K J 1/16W	
R683			RK73GB1J473J	CHIP R 47K J 1/16W	
R684			RK73GB1J105J	CHIP R 1.0M J 1/16W	
R685			RK73GB1J101J	CHIP R 100 J 1/16W	
R686			RK73GB1J222J	CHIP R 2.2K J 1/16W	
R688,689			RK73GB1J104J	CHIP R 100K J 1/16W	
R691,692			RK73GB1J473J	CHIP R 47K J 1/16W	
R695,696			RK73GB1J473J	CHIP R 47K J 1/16W	
R699			RK73GB1J473J	CHIP R 47K J 1/16W	
R700			RK73GB1J104J	CHIP R 100K J 1/16W	
R701			RK73GB1J183J	CHIP R 18K J 1/16W	
R702			RK73GB1J223J	CHIP R 22K J 1/16W	
R703			RK73GB1J153J	CHIP R 15K J 1/16W	
R704			RK73EB2B332J	CHIP R 3.3K J 1/8W	
R705			RK73EB2B152J	CHIP R 1.5K J 1/8W	
R706			RK73GB1J203J	CHIP R 20K J 1/16W	
R707			RK73GB1J103J	CHIP R 10K J 1/16W	
R708			RK73EB2B103J	CHIP R 10K J 1/8W	
R710			RK73EB2B102J	CHIP R 1.0K J 1/8W	
R711			RK73FB2A472J	CHIP R 4.7K J 1/10W	
R712			RK73FB2A332J	CHIP R 3.3K J 1/10W	
R713			RK73FB2A273J	CHIP R 27K J 1/10W	
R714			RK73FB2A472J	CHIP R 4.7K J 1/10W	
R715			RK73GB1J103J	CHIP R 10K J 1/16W	
R716			R92-2023-05	CHIP R 820 J 1/2W	
R717			RK73GB1J103J	CHIP R 10K J 1/16W	
R718			RK73GB1J561J	CHIP R 560 J 1/16W	

⚠ indicates safety critical components.

## PARTS LIST

\*New Parts

Parts without **Parts No.** are not supplied.

Les articles non mentionnes dans le **Parts No.** ne sont pas fournis.

Teile ohne **Parts No.** werden nicht geliefert.

(X14-6700-21)

Ref. No.	A d d	N e w	Parts No.	Description	Des- tina- tion
R719			RK73FB2A473J	CHIP R 47K J 1/10W	
R720			RN73GH1J4321D	CHIP R 4.32K D 1/16W	
R721			RN73GH1J102D	CHIP R 1.0K D 1/16W	
R722			RK73GB1J472J	CHIP R 4.7K J 1/16W	
R723			RK73EB2B561J	CHIP R 560 J 1/8W	
R724			RK73GB1J104J	CHIP R 100K J 1/16W	
R727			RK73FB2A222J	CHIP R 2.2K J 1/10W	
R728			RS14DB3A2R2J	FL-PROOF RS 2.2 J 1W	
R729			RN73GH1J562D	CHIP R 5.6K D 1/16W	
R730			RK73GB1J472J	CHIP R 4.7K J 1/16W	
R731			RN73GH1J102D	CHIP R 1.0K D 1/16W	
R732			RK73EB2B102J	CHIP R 1.0K J 1/8W	
R733			RN73GH1J393D	CHIP R 39K D 1/16W	
R734			RN73GH1J1242D	CHIP R 12.4K D 1/16W	
R735			RK73FB2A432J	CHIP R 4.3K J 1/10W	
R736			RK73FB2A822J	CHIP R 8.2K J 1/10W	
R737			RK73FB2A820J	CHIP R 82 J 1/10W	
R738-740			RK73GB1J104J	CHIP R 100K J 1/16W	
R741			RN73GH1J102D	CHIP R 1.0K D 1/16W	
R742			RK73GB1J472J	CHIP R 4.7K J 1/16W	
R743			RN73GH1J5491D	CHIP R 5.49K D 1/16W	
R801			RK73EB2B101J	CHIP R 100 J 1/8W	
R802-804			RK73EB2B102J	CHIP R 1.0K J 1/8W	
R805-808			RK73EB2B101J	CHIP R 100 J 1/8W	
R809			RK73GB1J104J	CHIP R 100K J 1/16W	
R810			RK73FB2A102J	CHIP R 1.0K J 1/10W	
R851			RS14DB3A3R3J	FL-PROOF RS 3.3 J 1W	
W1 -3			R92-1252-05	CHIP R 0 OHM	
W6 ,7			R92-1252-05	CHIP R 0 OHM	
D5			HZM5.6N(B2)	ZENER DIODE	
D205-208			1SR154-400	DIODE	
D301,302			HZM6.8WA	ZENER DIODE	
D301,302			MA3068WA	ZENER DIODE	
D301,302			STZ6.8N	ZENER DIODE	
D305-308			1SR154-400	DIODE	
D402			HZM6.8N	ZENER DIODE	
D403-406			DAP202K	DIODE	
D403-406			MA152WA	DIODE	
D407			HZ6C2L	ZENER DIODE	
D501			DAN217	DIODE	
D502			02CZ3.6-Z	ZENER DIODE	
D503			HZM6.8N	ZENER DIODE	
D504			DAP202K	DIODE	
D504			MA152WA	DIODE	
D505			02CZ3.6-Z	ZENER DIODE	
D601,602			DAP202K	DIODE	
D601,602			MA152WA	DIODE	
D603,604			DAN217	DIODE	
D701			RM10ZLF	DIODE	
D702			HZS7A3L	ZENER DIODE	
D703			02CZ12-X	ZENER DIODE	
D704			02CZ6.8-Y	ZENER DIODE	
D705			02CZ6.2-X	ZENER DIODE	
D706-708			1SR154-400	DIODE	

Ref. No.	A d d	N e w	Parts No.	Description	Des- tina- tion
D709			RB050L-40	DIODE	
D710			02CZ12-X	ZENER DIODE	
D712			DAN217	DIODE	
D713			DA227	DIODE	
D714			DAN202K	DIODE	
D714			MA152WK	DIODE	
D715			DAN217	DIODE	
D717			U1GWJ44	DIODE	
D718			02CZ5.6-X	ZENER DIODE	
D720			02CZ18-Y	ZENER DIODE	
D801,802			FTZ6.8E	ZENER DIODE	
D801,802			HZM6.8FA	ZENER DIODE	
D805			HZM6.8WA	ZENER DIODE	
D805			MA3068WA	ZENER DIODE	
D805			STZ6.8N	ZENER DIODE	
D851			02CZ5.1-Y	ZENER DIODE	
D852			02CZ7.5-X	ZENER DIODE	
IC1			M30624MGAA46FP	MI-COM IC	
IC2			TDA7501	ANALOGUE IC	
IC4			L4943	ANALOGUE IC	
IC6			TA8273H	ANALOGUE IC	
IC7			LM2596S-ADJ	HYBRID IC	
IC8			TDA7500	MOS-IC	
IC9			NJM4565M-TE2	ANALOGUE IC	
IC10,11			NJM2068MD	IC(OP AMP)	
IC12			NJM4565M-TE2	ANALOGUE IC	
IC14			SI-3033CA	HYBRID IC	
IC15			PST9142NR	ANALOGUE IC	
IC16			TC7W02FU	MOS-IC	
IC17			BA6219BFP-Y	ANALOGUE IC	
IC18			L88M05T	ANALOGUE IC	
IC19			IS63LV1024-15J	SRAM IC	
Q1			FMG1A	DIGITAL TRANSISTOR	
Q2 ,3			CPH3105	TRANSISTOR	
Q7			2SC4081	TRANSISTOR	
Q7			2SD1819A	TRANSISTOR	
Q202,203			DTC143TK	DIGITAL TRANSISTOR	
Q202,203			UN2216	DIGITAL TRANSISTOR	
Q302,303			DTC143TK	DIGITAL TRANSISTOR	
Q302,303			UN2216	DIGITAL TRANSISTOR	
Q402			DTC114EUA	DIGITAL TRANSISTOR	
Q402			UN5211	DIGITAL TRANSISTOR	
Q403			DTC144EK	DIGITAL TRANSISTOR	
Q403			KRC104S	DIGITAL TRANSISTOR	
Q403			UN2213	DIGITAL TRANSISTOR	
Q601			DTA124EK	DIGITAL TRANSISTOR	
Q601			KRA103S	DIGITAL TRANSISTOR	
Q601			UN2112	DIGITAL TRANSISTOR	
Q602			DTC114YK	DIGITAL TRANSISTOR	
Q602			KRC107S	DIGITAL TRANSISTOR	
Q602			UN2214	DIGITAL TRANSISTOR	
Q603,604			DTA114EK	DIGITAL TRANSISTOR	
Q603,604			KRA102S	DIGITAL TRANSISTOR	
Q603,604			UN2111	DIGITAL TRANSISTOR	
Q605			FMC2A	DIGITAL TRANSISTOR	



## PARTS LIST

\*New Parts

Parts without **Parts No.** are not supplied.

Les articles non mentionnes dans le **Parts No.** ne sont pas fournis.

Teile ohne **Parts No.** werden nicht geliefert.

(X14-6700-21)

Ref. No.	A d d	N e w	Parts No.	Description	Des- tina- tion
Q700			FMC2A	DIGITAL TRANSISTOR	
Q701			DTC144EK	DIGITAL TRANSISTOR	
Q701			KRC104S	DIGITAL TRANSISTOR	
Q701			UN2213	DIGITAL TRANSISTOR	
Q702			FMW1	TRANSISTOR	
Q703			DTC144EK	DIGITAL TRANSISTOR	
Q703			KRC104S	DIGITAL TRANSISTOR	
Q703			UN2213	DIGITAL TRANSISTOR	
Q704			DTA123JK	DIGITAL TRANSISTOR	
Q705			2SC4081	TRANSISTOR	
Q705			2SD1819A	TRANSISTOR	
Q706			2SB1188(R)	TRANSISTOR	
Q707			2SC4081	TRANSISTOR	
Q707			2SD1819A	TRANSISTOR	
Q708			2SC2412K(S)	TRANSISTOR	
Q709			FMC3A	DIGITAL TRANSISTOR	
Q710			2SB1548(P)	TRANSISTOR	
Q711			2SC2412K(S)	TRANSISTOR	
Q715			IMD16A	TRANSISTOR	
Q716			DTC144EK	DIGITAL TRANSISTOR	
Q716			KRC104S	DIGITAL TRANSISTOR	
Q716			UN2213	DIGITAL TRANSISTOR	
Q717			2SB1184	TRANSISTOR	
Q718			2SC2412K(S)	TRANSISTOR	
Q719			2SB1446	TRANSISTOR	
Q720			IMD16A	TRANSISTOR	
Q851			DTC144EK	DIGITAL TRANSISTOR	
Q851			KRC104S	DIGITAL TRANSISTOR	
Q851			UN2213	DIGITAL TRANSISTOR	
Q903			FMC2A	DIGITAL TRANSISTOR	
Q905			FMC2A	DIGITAL TRANSISTOR	
Q907			FMC2A	DIGITAL TRANSISTOR	
TH1			PTH9C32BB471Q	POSITIVE RESISTOR	
A1			X86-3280-11	TUNER UNIT	
<b>SUB-CIRCUIT UNIT (X16-1240-00)</b>					
D1 -4			B30-1565-05	LED(1608,PG)	
D5			B30-1566-05	LED(1608,RED)	
CN1			E41-0131-05	FLAT CABLE CONNECTOR	
R1 ,2			RK73EB2B561J	CHIP R 560 J 1/8W	
R3			RK73EB2B751J	CHIP R 750 J 1/8W	
R4			RK73EB2B181J	CHIP R 180 J 1/8W	
R5			RK73EB2B111J	CHIP R 110 J 1/8W	
VR1			R32-0249-05	SEMI FIXED VARIABLE RESISTOR	
D6 ,7			DNP1102F(A,B)	INFRARED LED	
D8			DAP202U	DIODE	
D8			MA152WA	DIODE	
PH1			PS1192F(C)	PHOTO TRANSISTOR	
<b>SWITCH UNIT (X25-8960-00)</b>					
301	2J	*	B11-1341-04	OPTICAL DIFFUSER	
302	1J	*	B11-1342-04	REFLECTION SHEET	
303	2J	*	B11-1354-04	OPTICAL DIFFUSER	
304	2J	*	B19-2097-03	LIGHTING BOARD	
D6 ,7			B30-1564-05	LED(1608,BLUE)	
D8 -14			B30-1599-05	LED(NICHIA FULL)	
D22 ,23			B30-1575-05	LED(1608,YG)	
ED1	2J		B38-1071-05	LIQUID CRYSTAL	
C1 -3			CK73GB1C104K	CHIP C 0.10UF K	
C4			C92-1359-05	CHIP-TAN 10UF 16WV	
C5			CK73GB1H103K	CHIP C 0.010UF K	
C6			C92-1430-05	CHIP C 22UF 16WV	
C7			C92-1359-05	CHIP-TAN 10UF 16WV	
C8 -11			CK73GB1C104K	CHIP C 0.10UF K	
C12			CK73GB1H681K	CHIP C 680PF K	
C13 -16			CK73GB1C104K	CHIP C 0.10UF K	
C17			CK73GB1H681K	CHIP C 680PF K	
C18			CK73GB1C104K	CHIP C 0.10UF K	
C19 -39			CK73GB1H103K	CHIP C 0.010UF K	
C40 -42			CK73GB1H471K	CHIP C 470PF K	
C43 ,44			CK73GB1H103K	CHIP C 0.010UF K	
C45			CK73GB1C104K	CHIP C 0.10UF K	
C46 -48			CK73GB1H471K	CHIP C 470PF K	
305	2I		E29-1855-04	CONDUCTIVE RUBBER	
CN1			E40-9527-05	FLAT CABLE CONNECTOR	
CN2			E41-0158-05	PIN ASSY	
CN3			E41-0159-05	SOCKET FOR PIN ASSY	
L1			L40-4795-34	SMALL FIXED INDUCTOR	
X1			L78-0842-05	RESONATOR	
CP1			R90-0725-05	MULTI-COMP1K X2	
CP2			R90-1016-05	MULTI-COMP470 X4	
CP3			R90-0724-05	MULTI-COMP1K X4	
CP4			R90-0725-05	MULTI-COMP1K X2	
CP5 ,6			R90-0719-05	MULTI-COMP4.7K X2	
CP7			R90-0724-05	MULTI-COMP1K X4	
CP8			R90-0748-05	MULTI-COMP47K X4	
CP9 -11			R90-0724-05	MULTI-COMP1K X4	
R1 -5			RK73EB2B471J	CHIP R 470 J 1/8W	
R6 ,7			RK73EB2B101J	CHIP R 100 J 1/8W	
R8			RK73EB2B471J	CHIP R 470 J 1/8W	
R9			RK73EB2B101J	CHIP R 100 J 1/8W	
R10			RK73EB2B102J	CHIP R 1.0K J 1/8W	
R11 ,12			RK73GB1J102J	CHIP R 1.0K J 1/16W	
R13			RK73GB1J472J	CHIP R 4.7K J 1/16W	
R14			RK73GB1J102J	CHIP R 1.0K J 1/16W	
R15			RK73GB1J104J	CHIP R 100K J 1/16W	
R16 ,17			RK73GB1J473J	CHIP R 47K J 1/16W	
R18			RK73GB1J223J	CHIP R 22K J 1/16W	
R19			RK73GB1J473J	CHIP R 47K J 1/16W	
R20			RK73GB1J104J	CHIP R 100K J 1/16W	
R21 ,22			RK73GB1J102J	CHIP R 1.0K J 1/16W	
R23			RK73GB1J473J	CHIP R 47K J 1/16W	
R24			RK73GB1J102J	CHIP R 1.0K J 1/16W	
R25			RK73GB1J220J	CHIP R 22 J 1/16W	
R26			RK73GB1J473J	CHIP R 47K J 1/16W	
R27			RK73GB1J102J	CHIP R 1.0K J 1/16W	
R28			RK73GB1J433J	CHIP R 43K J 1/16W	
R29			RK73GB1J473J	CHIP R 47K J 1/16W	
R30			RK73GB1J433J	CHIP R 43K J 1/16W	

⚠ indicates safety critical components.

## PARTS LIST

\*New Parts

Parts without **Parts No.** are not supplied.

Les articles non mentionnés dans le **Parts No.** ne sont pas fournis.

Teile ohne **Parts No.** werden nicht geliefert.

(X25-8960-00)

Ref. No.	A d d	N e w	Parts No.	Description	Des- tina- tion
R31 -36			RK73FB2A472J	CHIP R 4.7K J 1/10W	
R37 ,38			RK73EB2B391J	CHIP R 390 J 1/8W	
R39			RK73EB2B511J	CHIP R 510 J 1/8W	
R40 ,41			RK73EB2B391J	CHIP R 390 J 1/8W	
R42			RK73EB2B511J	CHIP R 510 J 1/8W	
R43 ,44			RK73EB2B391J	CHIP R 390 J 1/8W	
R45			RK73EB2B511J	CHIP R 510 J 1/8W	
R46 ,47			RK73EB2B391J	CHIP R 390 J 1/8W	
R48 ,49			RK73EB2B511J	CHIP R 510 J 1/8W	
R50 ,51			RK73EB2B391J	CHIP R 390 J 1/8W	
R52			RK73EB2B511J	CHIP R 510 J 1/8W	
R53 ,54			RK73EB2B391J	CHIP R 390 J 1/8W	
R55			RK73EB2B511J	CHIP R 510 J 1/8W	
R56 ,57			RK73EB2B391J	CHIP R 390 J 1/8W	
R58			RK73EB2B331J	CHIP R 330 J 1/8W	
R59			RK73EB2B391J	CHIP R 390 J 1/8W	
R60 -63			RK73EB2B561J	CHIP R 560 J 1/8W	
R64			RK73EB2B471J	CHIP R 470 J 1/8W	
R65			RK73EB2B101J	CHIP R 100 J 1/8W	
R66 -71			RK73GB1J472J	CHIP R 4.7K J 1/16W	
R72 -78			RK73EB2B511J	CHIP R 510 J 1/8W	
S1 -3			S70-0814-05	TACT SWITCH	
S4 ,5			S70-0869-05	TACT SWITCH	
S6 -8			S70-0873-05	TACT SWITCH	
S9			S62-0869-05	SLIDE SWITCH	
S10 ,11			S70-0873-05	TACT SWITCH	
S12			S62-0869-05	SLIDE SWITCH	
S13 -16			S70-0873-05	TACT SWITCH	
S17			S70-0869-05	TACT SWITCH	
S18			T99-0429-05	ROTARY ENCODER	
D1 -5			DAN202U	DIODE	
D15 -21			DAN202U	DIODE	
D24			02CZ8.2-Z	ZENER DIODE	
D25			HZM6.8WA	ZENER DIODE	
D26			HZM6.8FA	ZENER DIODE	
IC1			M30620MCA2L3FP	MI-COM IC	
IC2 ,3			LC75878W	MOS-IC	
IC4			RS-171	ANALOGUE IC	
Q1			DTC114YUA	DIGITAL TRANSISTOR	
Q2			FMC4A	DIGITAL TRANSISTOR	
Q3			2SC4081	TRANSISTOR	
Q4 -9			2SD2114K	TRANSISTOR	
C1			C92-0633-05	CHIP-TAN 22UF 10WV	
C2 ,3			CK73GB1H102K	CHIP C 1000PF K	
C4 ,5			C92-0628-05	CHIP-TAN 10UF 10WV	
C7			CK73EB1A475K	CHIP C 4.7UF K	
C8 ,9			CK73GB1C104K	CHIP C 0.10UF K	
C10 ,11			CK73GB1H102K	CHIP C 1000PF K	
C12 -14			CK73GB1C104K	CHIP C 0.10UF K	
C15			CK73EB1A475K	CHIP C 4.7UF K	
C16			C92-0628-05	CHIP-TAN 10UF 10WV	
C17 ,18			CK73GB1H102K	CHIP C 1000PF K	

Ref. No.	A d d	N e w	Parts No.	Description	Des- tina- tion
C19			CK73FB1C105K	CHIP C 1.0UF K	
C20			CK73GB1H102K	CHIP C 1000PF K	
C21			CC73GCH1H150J	CHIP C 15PF J	
<b>CD UNIT (X32-5320-00)</b>					
C22			C92-0628-05	CHIP-TAN 10UF 10WV	
C23			CK73GB1H102K	CHIP C 1000PF K	
C24			CC73GCH1H471J	CHIP C 470PF J	
C25			CK73GB1C104K	CHIP C 0.10UF K	
C26			CK73GB1H472K	CHIP C 4700PF K	
C27 ,28			CK73FB1C105K	CHIP C 1.0UF K	
C29 -31			CK73GB1C104K	CHIP C 0.10UF K	
C32			C92-0628-05	CHIP-TAN 10UF 10WV	
C33 ,34			CK73GB1C104K	CHIP C 0.10UF K	
C35			CC73GCH1H221J	CHIP C 220PF J	
C36			CK73GB1H102K	CHIP C 1000PF K	
C37			CK73GB1H103K	CHIP C 0.010UF K	
C39			CK73GB1H222K	CHIP C 2200PF K	
C40			CK73GB1C104K	CHIP C 0.10UF K	
C41			CK73GB1H103K	CHIP C 0.010UF K	
C42			CC73GCH1H101J	CHIP C 100PF J	
C43			CK73GB1C473K	CHIP C 0.047UF K	
C45			CK73GB1C104K	CHIP C 0.10UF K	
C46			CK73GB1H103K	CHIP C 0.010UF K	
C48			CK73GB1H103K	CHIP C 0.010UF K	
C49			CK73GB1C104K	CHIP C 0.10UF K	
C50			CK73GB1H103K	CHIP C 0.010UF K	
C52			CK73EB1A475K	CHIP C 4.7UF K	
C53			CK73GB1H103K	CHIP C 0.010UF K	
C54			CK73EB1A475K	CHIP C 4.7UF K	
C55			CK73GB1C104K	CHIP C 0.10UF K	
C56			C92-0628-05	CHIP-TAN 10UF 10WV	
C58			C92-0628-05	CHIP-TAN 10UF 10WV	
C60			CK73EB1A475K	CHIP C 4.7UF K	
C61			CK73GB1C333K	CHIP C 0.033UF K	
C62			CK73FB1C224K	CHIP C 0.22UF K	
C63			CK73GB1H472K	CHIP C 4700PF K	
C64			CK73GB1H222K	CHIP C 2200PF K	
C65 ,66			CK73EB1A475K	CHIP C 4.7UF K	
C67			CK73GB1C104K	CHIP C 0.10UF K	
C68 ,69			CK73EB1A475K	CHIP C 4.7UF K	
C70			CK73GB1H102K	CHIP C 1000PF K	
C71 -74			CK73GB1C104K	CHIP C 0.10UF K	
C75			CK73GB1H103K	CHIP C 0.010UF K	
C76			CK73GB1H102K	CHIP C 1000PF K	
C77 ,78			CC73GCH1H471J	CHIP C 470PF J	
C79 ,80			CC73GCH1H680J	CHIP C 68PF J	
C81			CK73EB1A475K	CHIP C 4.7UF K	
C82 ,83			C92-0628-05	CHIP-TAN 10UF 10WV	
C84 ,85			C92-0633-05	CHIP-TAN 22UF 10WV	
C86			CK73EB1A475K	CHIP C 4.7UF K	
C87			C92-0093-05	CHIP C 100UF 6.3WV	
C100			CK73GB1H103K	CHIP C 0.010UF K	
C101			CK73GB1C104K	CHIP C 0.10UF K	
CN1			E40-9339-05	FLAT CABLE CONNECTOR	

## PARTS LIST

\*New Parts

Parts without **Parts No.** are not supplied.

Les articles non mentionnes dans le **Parts No.** ne sont pas fournis.

Teile ohne **Parts No.** werden nicht geliefert.

(X32-5320-00)

Ref. No.	A d d	N e w	Parts No.	Description	Des- tina- tion
CN2			E40-9536-05	FLAT CABLE CONNECTOR	
L1 -4			L92-0308-05	FERRITE CORE	
L5			L40-1001-78	SMALL FIXED INDUCTOR(10UH)	
L5			L40-1001-93	SMALL FIXED INDUCTOR	
L5			L41-1001-10	SMALL FIXED INDUCTOR	
X1			L78-0810-05	RESONATOR	
X2			L78-0573-05	RESONATOR	
CP1 -7			R90-0714-05	MULTI-COMP 10K X4	
CP8 -10			R90-1012-05	MULTI-COMP 22K X4	
R1 ,2			RK73GB1J183J	CHIP R 18K J 1/16W	
R4 -7			RK73GB1J101J	CHIP R 100 J 1/16W	
R8			RK73GB1J331J	CHIP R 330 J 1/16W	
R9			RK73GB1J102J	CHIP R 1.0K J 1/16W	
R10			RK73GB1J103J	CHIP R 10K J 1/16W	
R12			RK73GB1J472J	CHIP R 4.7K J 1/16W	
R13			RK73GB1J102J	CHIP R 1.0K J 1/16W	
R14 ,15			RK73FB2A100J	CHIP R 10 J 1/10W	
R16 -19			RK73GB1J472J	CHIP R 4.7K J 1/16W	
R20 ,21			RK73GB1J222J	CHIP R 2.2K J 1/16W	
R22 ,23			RK73GB1J122J	CHIP R 1.2K J 1/16W	
R24 -26			RK73GB1J222J	CHIP R 2.2K J 1/16W	
R27			RK73GB1J122J	CHIP R 1.2K J 1/16W	
R28 ,29			RK73GB1J222J	CHIP R 2.2K J 1/16W	
R30 -33			RK73GB1J122J	CHIP R 1.2K J 1/16W	
R34			RK73GB1J104J	CHIP R 100K J 1/16W	
R35			RK73GB1J102J	CHIP R 1.0K J 1/16W	
R36 ,37			RK73GB1J4R7J	CHIP R 4.7 J 1/16W	
R38 ,39			RK73GB1J472J	CHIP R 4.7K J 1/16W	
R40			RK73GB1J102J	CHIP R 1.0K J 1/16W	
R41			RK73GB1J471J	CHIP R 470 J 1/16W	
R42			RK73GB1J104J	CHIP R 100K J 1/16W	
R43			RK73GB1J393J	CHIP R 39K J 1/16W	
R44			RK73GB1J102J	CHIP R 1.0K J 1/16W	
R45			RK73GB1J103J	CHIP R 10K J 1/16W	
R46			RK73GB1J912J	CHIP R 9.1K J 1/16W	
R47			RK73GB1J332J	CHIP R 3.3K J 1/16W	
R48			RK73GB1J682J	CHIP R 6.8K J 1/16W	
R49			RK73GB1J103J	CHIP R 10K J 1/16W	
R50			RK73GB1J123J	CHIP R 12K J 1/16W	
R51			RK73GB1J824J	CHIP R 820K J 1/16W	
R52			RK73GB1J103J	CHIP R 10K J 1/16W	
R53			RK73GB1J563J	CHIP R 56K J 1/16W	
R54			RK73GB1J102J	CHIP R 1.0K J 1/16W	
R55			RK73GB1J103J	CHIP R 10K J 1/16W	
R56			RK73GB1J682J	CHIP R 6.8K J 1/16W	
R57			RK73GB1J622J	CHIP R 6.2K J 1/16W	
R58			RK73GB1J122J	CHIP R 1.2K J 1/16W	
R59			RK73GB1J102J	CHIP R 1.0K J 1/16W	
R60			RK73GB1J183J	CHIP R 18K J 1/16W	
R61 ,62			R92-1252-05	CHIP R 0 OHM	
R63			RK73GB1J103J	CHIP R 10K J 1/16W	
R64			RK73GB1J102J	CHIP R 1.0K J 1/16W	

Ref. No.	A d d	N e w	Parts No.	Description	Des- tina- tion
R65			RK73EB2B100J	CHIP R 10 J 1/8W	
R66			RK73GB1J103J	CHIP R 10K J 1/16W	
R67			RK73EB2B4R7J	CHIP R 4.7 J 1/8W	
R68			RK73FB2A820J	CHIP R 82 J 1/10W	
R69 -72			R92-1252-05	CHIP R 0 OHM	
R73			RK73FB2A103J	CHIP R 10K J 1/10W	
R75 ,76			RK73GB1J103J	CHIP R 10K J 1/16W	
R77 ,78			RK73GB1J472J	CHIP R 4.7K J 1/16W	
R79			RK73GB1J223J	CHIP R 22K J 1/16W	
R80 ,81			RK73GB1J472J	CHIP R 4.7K J 1/16W	
R82			RK73GB1J102J	CHIP R 1.0K J 1/16W	
R83			RK73GB1J223J	CHIP R 22K J 1/16W	
R84			RK73GB1J331J	CHIP R 330 J 1/16W	
R85			RK73GB1J220J	CHIP R 22 J 1/16W	
R86			RK73GB1J222J	CHIP R 2.2K J 1/16W	
R87			RK73GB1J122J	CHIP R 1.2K J 1/16W	
R88			RK73GB1J104J	CHIP R 100K J 1/16W	
R90			RK73GB1J101J	CHIP R 100 J 1/16W	
R91			RK73GB1J222J	CHIP R 2.2K J 1/16W	
R94			RK73GB1J512J	CHIP R 5.1K J 1/16W	
R95			RK73GB1J222J	CHIP R 2.2K J 1/16W	
R96 -99			RK73GB1J203J	CHIP R 20K J 1/16W	
R100			RK73GB1J103J	CHIP R 10K J 1/16W	
R101			RK73GB1J512J	CHIP R 5.1K J 1/16W	
R102			RK73FB2A4R7J	CHIP R 4.7 J 1/10W	
R103			RK73GB1J103J	CHIP R 10K J 1/16W	
R104			RK73GB1J331J	CHIP R 330 J 1/16W	
R105			RK73FB2A4R7J	CHIP R 4.7 J 1/10W	
R106			R92-1252-05	CHIP R 0 OHM	
R107,108			RK73GB1J332J	CHIP R 3.3K J 1/16W	
R109,110			RK73GB1J562J	CHIP R 5.6K J 1/16W	
R111			R92-1252-05	CHIP R 0 OHM	
R200,201			RK73GB1J103J	CHIP R 10K J 1/16W	
R202			RK73GB1J681J	CHIP R 680 J 1/16W	
S1 ,2			S68-0838-05	PUSH SWITCH	
S3			S68-0859-05	PUSH SWITCH	
D1 -3			DAN202U	DIODE	
IC1			M30624MGAA60GP	MI-COM IC	
IC2			UPD63724B	MOS-IC	
IC3			TC74HC157AF	IC(MULTIPLEXER)	
IC4			LP2982-3.3	ANALOGUE IC	
IC5			STA013	MOS-IC	
IC6			MSM514260CP-60	MEMORY IC	
IC7			TC7SH04F	MOS-IC	
IC8			TA78L05F	IC(VOLTAGE REGULATOR/+5V)	
IC9			PCM1716E	MOS-IC	
IC10			UPC2575GS	ANALOGUE IC	
IC11			BA5917AFP	ANALOGUE IC	
IC12			NJM5532MD	IC(OP AMP)	
IC13			NJM2903M	IC(COMPATORX2)	
Q1			MCH6101	TRANSISTOR	
Q2			DTC124EUA	DIGITAL TRANSISTOR	
Q3			MCH6101	TRANSISTOR	

⚠ indicates safety critical components.

## PARTS LIST

\*New Parts

Parts without **Parts No.** are not supplied.

Les articles non mentionnés dans le **Parts No.** ne sont pas fournis.

Teile ohne **Parts No.** werden nicht geliefert.

(X32-5320-00)

Ref. No.	A d d	N e w	Parts No.	Description	Des- tina- tion
Q4			DTC124EUA	DIGITAL TRANSISTOR	
Q5 -7			2SK3018	FET	
Q8			MCH6101	TRANSISTOR	
Q9			DTC124EUA	DIGITAL TRANSISTOR	
<b>MD UNIT (X33-3130-01)</b>					
C1			CK73GB1H102K	CHIP C 1000PF K	
C5 ,6			C92-0628-05	CHIP-TAN 10UF 10WV	
C7			CK73GB1H103K	CHIP C 0.010UF K	
C8			CK73GB1E223K	CHIP C 0.022UF K	
C9			C92-0628-05	CHIP-TAN 10UF 10WV	
C10			CK73GB1C104K	CHIP C 0.10UF K	
C11			CK73GB1H103K	CHIP C 0.010UF K	
C12			CK73GB1C104K	CHIP C 0.10UF K	
C13			CK73GB1E223K	CHIP C 0.022UF K	
C14			CK73GB1H472K	CHIP C 4700PF K	
C15			CK73GB1C104K	CHIP C 0.10UF K	
C16			CK73GB0J105K	CHIP C 1.0UF K	
C17			CK73GB1H472K	CHIP C 4700PF K	
C18			CK73GB1A224K	CHIP C 0.22UF K	
C19			CK73FB0J475K	CHIP C 4.7UF K	
C20			CK73GB1H103K	CHIP C 0.010UF K	
C21			CK73GB0J105K	CHIP C 1.0UF K	
C22			CK73GB1C104K	CHIP C 0.10UF K	
C23			CK73GB1H103K	CHIP C 0.010UF K	
C24 -26			CK73GB1C104K	CHIP C 0.10UF K	
C27			C92-0628-05	CHIP-TAN 10UF 10WV	
C28			CK73GB0J105K	CHIP C 1.0UF K	
C29			CK73GB1A474K	CHIP C 0.47UF K	
C30			CK73GB1H103K	CHIP C 0.010UF K	
C31			CC73GCH1H101J	CHIP C 100PF J	
C32			CK73GB1A474K	CHIP C 0.47UF K	
C33			CK73GB1H153K	CHIP C 0.015UF K	
C34 ,35			CK73GB1C104K	CHIP C 0.10UF K	
C36 ,37			CK73FB0J475K	CHIP C 4.7UF K	
C38 ,39			CK73GB1C104K	CHIP C 0.10UF K	
C40			CK73GB1H103K	CHIP C 0.010UF K	
C41			CK73GB1C104K	CHIP C 0.10UF K	
C42 ,43			CK73GB0J105K	CHIP C 1.0UF K	
C44 ,45			CK73GB1H103K	CHIP C 0.010UF K	
C46			C92-0628-05	CHIP-TAN 10UF 10WV	
C47 -49			CK73GB1C104K	CHIP C 0.10UF K	
C51 -54			CK73GB1H222K	CHIP C 2200PF K	
C55 -58			CK73GB1E223K	CHIP C 0.022UF K	
C59			CK73GB1H103K	CHIP C 0.010UF K	
C60			CK73EB0J106K	CHIP C 10UF K	
C61			C92-0628-05	CHIP-TAN 10UF 10WV	
C74			C92-0628-05	CHIP-TAN 10UF 10WV	
C75			CK73GB1H103K	CHIP C 0.010UF K	
C76			CK73EB1E105K	CHIP C 1.0UF K	
C81 ,82			CK73GB1C104K	CHIP C 0.10UF K	
C83			CK73FB0J475K	CHIP C 4.7UF K	
C84			CK73GB1C104K	CHIP C 0.10UF K	
CN1			E40-9521-05	FLAT CABLE CONNECTOR	
CN2			E40-9339-05	FLAT CABLE CONNECTOR	

Ref. No.	A d d	N e w	Parts No.	Description	Des- tina- tion
L1 -4			L92-0322-05	CHIP FERRITE	
X1			L78-0839-05	RESONATOR	
X2			L78-0571-05	RESONATOR	
CP1			R90-0726-05	MULTI-COMP 10K X2	
CP2			R90-0722-05	MULTI-COMP 2.2K X4	
CP3			R90-0724-05	MULTI-COMP 1K X4	
CP4 ,5			R90-0720-05	MULTI-COMP 100K X4	
CP6			R90-1014-05	MULTI-COMP 100 X4	
CP7			R90-1019-05	MULTI-COMP 100 X2	
CP8			R90-1014-05	MULTI-COMP 100 X4	
CP9			R90-0719-05	MULTI-COMP 4.7K X2	
CP10			R90-0720-05	MULTI-COMP 100K X4	
R1			RK73GB1J472J	CHIP R 4.7K J 1/16W	
R2 ,3			RK73GB1J474J	CHIP R 470K J 1/16W	
R5			RK73FB2A4R7J	CHIP R 4.7 J 1/10W	
R6			RK73GB1J104J	CHIP R 100K J 1/16W	
R7			RK73GB1J103J	CHIP R 10K J 1/16W	
R8			RK73GB1J913J	CHIP R 91K J 1/16W	
R9 -11			RK73GB1J133J	CHIP R 13K J 1/16W	
R12			RK73GB1J472J	CHIP R 4.7K J 1/16W	
R13			RK73GB1J562J	CHIP R 5.6K J 1/16W	
R14			RK73GB1J151J	CHIP R 150 J 1/16W	
R15			RK73GB1J473J	CHIP R 47K J 1/16W	
R16			RK73GB1J333J	CHIP R 33K J 1/16W	
R17			RK73GB1J101J	CHIP R 100 J 1/16W	
R18			RK73GB1J563J	CHIP R 56K J 1/16W	
R19			RK73GB1J101J	CHIP R 100 J 1/16W	
R20			RK73GB1J331J	CHIP R 330 J 1/16W	
R21			RK73GB1J681J	CHIP R 680 J 1/16W	
R23			RK73GB1J394J	CHIP R 390K J 1/16W	
R24			RK73GB1J681J	CHIP R 680 J 1/16W	
R25			RK73GB1J103J	CHIP R 10K J 1/16W	
R26			RK73GB1J101J	CHIP R 100 J 1/16W	
R27			RK73GB1J151J	CHIP R 150 J 1/16W	
R28 ,29			RK73GB1J102J	CHIP R 1.0K J 1/16W	
R30			RK73GB1J332J	CHIP R 3.3K J 1/16W	
R31			RK73GB1J684J	CHIP R 680K J 1/16W	
R32			RK73GB1J104J	CHIP R 100K J 1/16W	
R33			RK73GB1J103J	CHIP R 10K J 1/16W	
R34			RK73GB1J473J	CHIP R 47K J 1/16W	
R36			RK73GB1J101J	CHIP R 100 J 1/16W	
R40 -42			RK73GB1J472J	CHIP R 4.7K J 1/16W	
R43 ,44			RK73GB1J183J	CHIP R 18K J 1/16W	
R45 -47			RK73GB1J472J	CHIP R 4.7K J 1/16W	
R48 ,49			RK73GB1J183J	CHIP R 18K J 1/16W	
R50			RK73GB1J472J	CHIP R 4.7K J 1/16W	
R51 ,52			RK73GB1J153J	CHIP R 15K J 1/16W	
R53 ,54			RK73GB1J472J	CHIP R 4.7K J 1/16W	
R55 ,56			RK73GB1J133J	CHIP R 13K J 1/16W	
R57			RK73GB1J472J	CHIP R 4.7K J 1/16W	
R58			RK73GB1J912J	CHIP R 9.1K J 1/16W	
R59 ,60			RK73GB1J363J	CHIP R 36K J 1/16W	
R61			RK73GB1J912J	CHIP R 9.1K J 1/16W	
R77			RK73GB1J472J	CHIP R 4.7K J 1/16W	

## PARTS LIST

\*New Parts

Parts without **Parts No.** are not supplied.

Les articles non mentionnes dans le **Parts No.** ne sont pas fournis.

Teile ohne **Parts No.** werden nicht geliefert.

(X33-3130-01)

Ref. No.	A d d	N e w	Parts No.	Description	Des- tina- tion
R78			RK73GB1J103J	CHIP R 10K J 1/16W	
R79			RK73GB1J104J	CHIP R 100K J 1/16W	
R80			RK73GB1J102J	CHIP R 1.0K J 1/16W	
R81			RK73GB1J104J	CHIP R 100K J 1/16W	
R82			RK73GB1J103J	CHIP R 10K J 1/16W	
R84			RK73GB1J102J	CHIP R 1.0K J 1/16W	
R85			RK73GB1J103J	CHIP R 10K J 1/16W	
R86			RK73GB1J472J	CHIP R 4.7K J 1/16W	
S1 -4			S68-0838-05	PUSH SWITCH	
D1			KDS121	DIODE	
IC1			CXA2523AR	ANALOGUE IC	
IC2			CXD2667R	MOS-IC	
IC3			S-817A25ANB	MOS-IC	
IC4			LA6572	ANALOGUE IC	
IC6			LP2982-3.3	ANALOGUE IC	
IC7			TC74HCT7007AF	MOS-IC	
IC8			780076YGK-R01	MI-COM IC	
IC9			BR24C02FV-W	MEMORY IC	
IC9			CAT24WC02UI	MEMORY IC	
IC9			M24C02WDW6T	MEMORY IC	
Q1			2SA1362(Y)	TRANSISTOR	
Q1			2SB1295	TRANSISTOR	
Q2			DTA114EUA	DIGITAL TRANSISTOR	
Q2			KRA302	DIGITAL TRANSISTOR	
Q3			2SC4116(Y)	TRANSISTOR	
Q4			MCH6101	TRANSISTOR	
Q5			KTA2014(Y,GR)	TRANSISTOR	
Q5			2SA1576A	TRANSISTOR	
Q6			DTC143EUA	DIGITAL TRANSISTOR	
Q6			KRC401	DIGITAL TRANSISTOR	
Q7			KTA2014(Y,GR)	TRANSISTOR	
Q7			2SA1576A	TRANSISTOR	
TH1			NT732ATD33KJ	THERMISTOR	
<b>CD MECHANISM (X92-4420-00)</b>					
401	2C		A10-4482-01	CHASSIS	
402	1D		A10-4225-33	CHASSIS CALKING ASSY	
403	2D		A11-0915-43	SUB CHASSIS CALKING ASSY	
406	2C		D10-4306-04	ARM ASSY	
407	2C		D10-4305-04	ARM ASSY	
408	3C		D10-3087-44	ARM ASSY	
409	3D		D10-3092-03	SLIDER	
410	3D		D10-3093-04	SLIDER ASSY	
411	2D		D10-3095-04	SLIDER ASSY	
412	2D		D10-3096-04	SLIDER ASSY	
413	1C		D10-3099-24	SLIDER ASSY	
414	1C		D10-3100-04	SLIDER ASSY	
416	1D		D10-4004-04	LEVER ASSY	
417	1D		D10-4006-04	LEVER	
418	1C		D10-4007-04	LEVER	
419	2D		D10-4008-14	LEVER	
420	2C		D10-4009-23	ARM	
421	3C		D10-4010-04	LEVER	
422	3C		D10-4307-04	LEVER ASSY	
424	3D		D10-4050-04	ARM	
425	3C		D10-4038-23	ARM ASSY	
426	2C		D10-4123-24	LEVER ASSY	
427	3C		D13-1442-03	RACK (GEAR)	
429	3D		D13-1231-04	GEAR	
430	3C		D13-1240-04	GEAR	
431	3D		D13-1233-04	GEAR	
432	3D		D13-1234-14	GEAR ASSY	
433	3C		D13-1441-03	GEAR	
434	3D		D13-1232-04	GEAR	
435	3D		D13-1241-04	GEAR	
436	3C		D13-1242-04	GEAR	
437	1D		D13-1243-04	GEAR	
438	1D		D13-1244-04	GEAR	
439	1D		D13-1245-14	GEAR	
440	2C		D13-1246-04	GEAR	
441	2D		D13-1247-04	GEAR	
443	2D		D13-1249-04	GEAR ASSY	
444	2D		D13-2091-04	GEAR ASSY (LEAD SCREW)	
445	1D		D14-0668-04	ROLLER	
446	2C		D14-0670-04	ROLLER	
447	3D		D14-0674-04	ROLLER	
449	3C		D21-2228-14	SHAFT	
450	1C		D21-2229-04	SHAFT	
451	1C		D23-0925-24	RETAINER	
452	2C		D32-0614-04	STOPPER	
453	1D		D39-0223-05	DAMPER (YELLOW)	
454	2D		D39-0224-05	DAMPER (BLACK)	
455	3D		F09-1246-04	SHEET	
458	3D		F09-1266-14	SHEET	
460	2C		G01-2770-04	EXTENSION SPRING	
461	3C		G01-2771-04	EXTENSION SPRING	
462	3C		G01-2772-24	EXTENSION SPRING	
463	3C		G01-2773-14	EXTENSION SPRING	
464	3C		G01-2774-34	EXTENSION SPRING	
465	1D		G01-2775-04	TORSION COIL SPRING	
466	1D		G01-2776-14	TORSION COIL SPRING	
467	3D		G01-2777-24	TORSION COIL SPRING	
469	2C		G01-2844-04	EXTENSION SPRING	
470	2C		G02-1231-04	FLAT SPRING	
471	2D		G02-1319-04	FLAT SPRING	
472	2C		G02-1241-24	FLAT SPRING	
475	2C		J11-0613-13	CLAMPER	
476	3C		J19-4678-13	HOLDER	
477	2D		J19-4923-04	HOLDER	
478	3D		J21-7684-13	MOUNTING HARDWARE	
479	2D		J21-7686-13	MOUNTING HARDWARE	
480	1D		J21-7690-03	MOUNTING HARDWARE	
482	3C		J84-0107-05	FLEXIBLE PRINTED WIRING BOARD	
483	1C		J90-0757-22	GUIDE	
A	2C		N09-4249-05	MACHINE SCREW(M1.7X2.5,LOCK)	
B	1D		N09-4172-05	TAPPING SCREW(2X3.5,CTITE)	

⚠ indicates safety critical components.

## PARTS LIST

\*New Parts

Parts without **Parts No.** are not supplied.

Les articles non mentionnes dans le **Parts No.** ne sont pas fournis.

Teile ohne **Parts No.** werden nicht geliefert.

(X92-4420-00)

Ref. No.	A d d	N e w	Parts No.	Description	Des- tina- tion
C	2D		N09-4202-05	STEPPED SCREW	
D	2C		N38-2020-46	PAN HEAD MACHIN SCREW	
E	3C		N09-4294-05	TAPTITE SCREW(BINDP TAPTIT)	
F	3D		N19-2023-04	FLAT WASHER	
G	2C		N19-2058-04	FLAT WASHER	
H	3C		N19-2093-04	FLAT WASHER	
J	2C		N39-2020-46	PAN HEAD MACHIN SCREW	
DM1	3D		T42-0764-04	DC MOTOR ASSY	
DM2	3D		T42-0763-04	DC MOTOR ASSY	
DPU1	2D		T25-0215-05	OPTICAL PICKUP HEAD	
<b>MD MECHANISM (X92-4280-00)</b>					
1	1B	*	A10-4870-01	CHASSIS	
2	2A		A10-4485-23	CHASSIS CALKING ASSY	
3	2B		A10-4486-23	CHASSIS ASSY	
5	1B		A10-4488-14	CHASSIS CALKING ASSY	
6	2A		A10-4869-03	CHASSIS ASSY	
7	3A		A10-4871-03	CHASSIS CALKING ASSY	
11	2B		D10-4278-14	LEVER	
12	2B		D10-4601-04	LEVER	
13	2B		D10-4288-24	SLIDER ASSY	
14	1B		D10-4290-14	ARM ASSY	
21	1B		D13-1433-03	RACK (GEAR)	
22	1B		D13-1434-04	GEAR	
23	1B		D13-1435-04	GEAR	
24	1B		D13-1436-04	GEAR	
25	1B		D13-1437-04	GEAR	
26	2B		D13-2170-04	GEAR ASSY	
31	2A		D21-2296-04	SHAFT	
32	1A		D21-2297-04	SHAFT	
33	2A		D39-0235-04	DAMPER	
34	2A		D39-0236-04	DAMPER	
41	1B		G01-2914-04	TORSION COIL SPRING	
42	1B		G01-2915-04	TORSION COIL SPRING	
43	2B		G01-2917-04	COMPRESSION SPRING	
44	1A		G01-2918-04	EXTENSION SPRING	
45	1A		G01-2919-04	EXTENSION SPRING	
47	2A		G01-2948-14	EXTENSION SPRING	
48	2B		G01-2964-04	TORSION COIL SPRING	
49	1A		G02-1298-03	FLAT SPRING	
51	3B		J12-1022-04	PIN	
61	1B		J19-4866-04	HOLDER	
62	3A		J19-4867-03	HOLDER	
A	3A		N09-4349-05	TAPTITE SCREW	
B	1B		N09-4236-05	MACHINE SCREW(M2X 2.2)	
C	1A		N09-4319-05	MACHINE SCREW(M2X4)	
D	2B		N09-4269-05	MACHINE SCREW(M1.7X2.5 2)	
E	1A		N09-4233-05	MACHINE SCREW(M1.4X2)	
F	1B		N19-2029-04	FLAT WASHER	
G	1B		N19-2127-14	FLAT WASHER	
H	3A		N09-4126-05	MACHINE SCREW(2X3.5,C)	
M1	3A		T42-0791-14	MOTOR ASSY	
M2	2A		T42-1046-04	MOTOR ASSY	

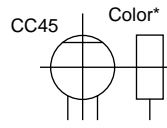
Ref. No.	A d d	N e w	Parts No.	Description	Des- tina- tion
M3	1B		T42-0790-14	MOTOR ASSY	
MPU1	2A		T25-0219-05	OPTICAL PICKUP HEAD	
<b>PANEL MECHANISM (D40-1162-05)</b>					
601	3F	*	A10-4678-08	CHASSIS ASSY	
602	2E	*	A11-0983-08	SUB SHASSIS	
603	2F	*	D13-2057-08	GEAR ASSY	
604	2F	*	D10-4455-08	ARM ASSY	
606	1E	*	J21-9501-08	BRACKET	
607	2F	*	J21-9502-08	BRACKET	
608	2E	*	D13-2058-08	GEAR ASSY	
609	2E	*	D13-2059-08	GEAR ASSY	
611	3F	*	G16-1138-08	SHEET	
612	2E		J90-0955-08	RAIL	
613	2F		G02-1334-08	FLAT SPRING	
614	2F		D10-4397-08	ARM	
615	2F		G09-2028-08	FLAT SPRING	
616	2E		D13-2020-08	GEAR	
617	2F		J90-0956-08	GUIDE	
618	3F		J19-4964-08	HOLDER	
619	3F		J19-4965-18	HOLDER	
620	2F		D13-1421-08	GEAR	
621	2E		D13-2021-08	GEAR	
622	2F		D13-2024-08	GEAR	
623	2F		D13-2025-08	GEAR	
624	2F		D13-2026-08	GEAR	
625	2F		J30-1062-08	COLLER	
626	3F	*	J30-1063-08	COLLER	
627	1E	*	E39-0325-08	CORD WITH CONNECTOR	
630	2E	*	G01-2991-08	SPRING	
631	1E	*	G01-2992-08	SPRING	
632	2E	*	G01-2993-08	SPRING	
633	3E	*	G01-2994-08	SPRING	
634	3E		G01-2936-08	SPRING	
635	3F		J90-0957-08	CUSHION	
642	2F	*	R33-0204-08	VARIABLE RESISTOR	
A	2F		N09-4343-08	SCREW	
B	2E		N09-4303-08	SCREW	
C	2E		N09-4341-08	SCREW	
D	2F	*	N09-4358-08	SCREW	
E	2E		N38-2025-45	SCREW	
F	3F		N38-2630-45	SCREW	
G	1E		N32-2604-46	SCREW	
H	2E	*	N29-0516-08	RETAINING RING	
J	2F	*	N29-0517-08	RETAINING RING	
K	2F		N19-1135-08	WASHER	
L	2E	*	N19-2143-08	WASHER	
PM1	1E	*	T42-1012-08	MOTOR ASSY	
PS1	2E		S68-0835-08	SWITCH	

## PARTS LIST

### CAPACITORS

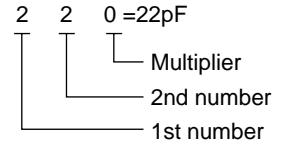
CC 45 TH 1H 220 J  
1 2 3 4 5 6

- 1 = Type ...ceramic, electrolytic, etc.
- 2 = Shape ...round, square, etc.
- 3 = Temp. coefficient
- 4 = Voltage rating
- 5 = Value
- 6 = Tolerance



#### •Capacitor value

- 010= 1pF
- 100= 10pF
- 101= 100pF
- 102= 1000pF=0.001μF
- 103= 0.01μF



#### • Temperature coefficient

1st Word	C	L	P	R	S	T	U
Color*	Black	Red	Orange	Yellow	Green	Blue	Violet
ppm/°C	0	-80	-150	-220	-330	-470	-750

2nd Word	G	H	J	K	L
ppm/°C	±30	±60	±120	±250	±500

Example : CC45TH = -470 ± 60ppm/°C

#### • Tolerance (More than 10pF)

Code	C	D	G	J	K	M	X	Z	P	No code
(%)	±0.25	±0.5	±2	±5	±10	±20	+40 -40	+80 -20	+100 -0	More than 10μF -10~+50 Less than 4.7μF -10~+75

#### (Less than 10pF)

Code	B	C	D	F	G
(pF)	±0.1	±0.25	±0.5	±1	±2

#### • Voltage rating

2nd word	1st word											
0	A	B	C	D	E	F	G	H	J	K	V	
1	1.0	1.25	1.6	2.0	2.5	3.15	4.0	5.0	6.3	8.0	-	
2	10	12.5	16	20	25	31.5	40	50	63	80	35	
3	100	125	160	200	250	315	400	500	630	800	-	
4	1000	1250	1600	2000	2500	3150	4000	5000	6300	8000	-	

#### • Chip resistors

(EX) C C 7 3 F S L 1 H 0 0 0 J  
1 2 3 4 5 6 7

(Chip)(CH,RH<UJ,SL)

(EX) C K 7 3 F F 1 H 0 0 0 Z  
1 2 3 4 5 6 7

(Chip)(B,F)

Refer to the table above.

- 1 = Type
- 2 = Shape
- 3 = Dimension
- 4 = Temp. coefficient
- 5 = Voltage rating
- 6 = Value
- 7 = Tolerance

#### Dimension (Chip capacitors)

Dimension code	L	W	T
Empty	5.6 ± 0.5	5.0 ± 0.5	Less than 2.0
A	4.5 ± 0.5	3.2 ± 0.4	Less than 2.0
B	4.5 ± 0.5	2.0 ± 0.3	Less than 2.0
C	4.5 ± 0.5	1.25 ± 0.2	Less than 1.25
D	3.2 ± 0.4	2.5 ± 0.3	Less than 1.5
E	3.0 ± 0.2	1.6 ± 0.2	Less than 1.25
F	2.0 ± 0.3	1.25 ± 0.2	Less than 1.25
G	1.6 ± 0.2	0.8 ± 0.2	Less than 1.0
H	1.0 ± 0.05	0.5 ± 0.05	0.5 ± 0.05

### RESISTORS

#### • Chip resistor (Carbon)

(EX) R K 7 3 E B 2 B 0 0 0 J  
1 2 3 4 5 6 7

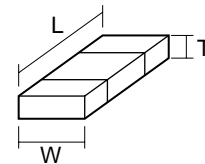
(Chip)(B,F)

#### • Carbon resistor (Normal type)

(EX) R D 1 4 B B 2 C 0 0 0 J  
1 2 3 4 5 6 7

- 1 = Type
- 2 = Shape
- 3 = Dimension
- 4 = Temp. coefficient
- 5 = Rating wattage
- 6 = Value
- 7 = Tolerance

#### Dimension



#### Dimension (Chip resistor)

Dimension code	L	W	T
E	3.2 ± 0.2	1.6 ± 0.2	1.0
F	2.0 ± 0.3	1.25 ± 0.2	1.0
G	1.6 ± 0.2	0.8 ± 0.2	0.5 ± 0.1
H	1.0 ± 0.05	0.5 ± 0.05	0.35 ± 0.05

#### Rating wattage

Code	Wattage	Code	Wattage	Code	Wattage
1J	1/16W	2C	1/16W	3A	1W
2A	1/10W	2E	1/4W	3D	2W
2B	1/8W	2H	1/2W		

# DPX-8020MD

## SPECIFICATIONS

### FM

Frequency Range (Frequency Step) .....	87.5MHz ~ 108.0MHz (50kHz)
Usable Sensitivity S/N: 30dB .....	9.3dBf (0.8 $\mu$ V/75 $\Omega$ )
Quieting Sensitivity S/N: 50dB .....	15.2dBf (1.6 $\mu$ V/75 $\Omega$ )
Frequency Response ( $\pm$ 3.0dB) .....	30Hz ~ 15kHz
S/N (dB) .....	70dB (MONO)
Selectivity .....	$\geq$ 80dB ( $\pm$ 400kHz)
Stereo Separation .....	40dB (1kHz)

### AM

Frequency Range (Frequency Step) .....	531kHz ~ 1611kHz (9kHz)
Usable Sensitivity S/N: 20dB .....	28dB $\mu$ V (25 $\mu$ V)

### CD

Laser Diode .....	GaAlAs ( $\lambda$ =780nm)
Digital Filter (D/A) .....	8 Times Over Sampling
Spindle Speed .....	500 ~ 200rpm (CLV)
Wow & Flutter .....	Below Mesurable Limit
Frequency Response .....	10Hz ~ 20kHz ( $\pm$ 1dB)
Total Harmonic Distortion .....	0.01% (1kHz)
S/N Ratio .....	95dB (1kHz)
Dynamic Range .....	95dB
Channel Separation .....	85dB
MP3 decode .....	compliant with MPEG-1.0 Audio Layer-3

### MD

Laser Diode .....	GaAlAs ( $\lambda$ =780nm)
Digital Filter (D/A) .....	8 Times Over Sampling
Spindle Speed .....	400 ~ 900rpm (CLV)
Wow & Flutter .....	Below Mesurable Limit
Frequency Response .....	20Hz ~ 20kHz ( $\pm$ 1dB)
Total Harmonic Distortion .....	0.01% (1kHz)
S/N Ratio .....	93dB (1kHz)
Dynamic Range .....	93dB
Channel Separation .....	85dB

### AMP

Maximum Power .....	50W $\times$ 4
Full Bandwidth Power .....	22W $\times$ 4 (at less than 1%THD)
Preout Level (V) .....	1500mV/10k $\Omega$
Preout Impedance ( $\Omega$ ) .....	$\leq$ 600 $\Omega$

### DSP/EQ

A/D converter .....	3-dimensional 20bit $\Delta \Sigma$ system 128 times oversampling
D/A converter .....	3-dimensional 20bit $\Delta \Sigma$ system 128 times oversampling
EQ Frequency (Hz) .....	60/120/250/500/1k/2k/4k/8k/16k
Adjustable Range (dB) .....	$\pm$ 12dB ( $\pm$ 6 STEP)

### GENE.

Operating Voltage .....	14.4V (11V ~ 16V)
Current Consumption .....	10A
Installation Size (W) x (H) x (D) (mm) .....	178 $\times$ 100 $\times$ 155
(inch) .....	7 $\times$ 3-15/16 $\times$ 6-1/8
Weight .....	3.3kg

---

KENWOOD follows a policy of continuous advancements in development. For this reason specifications may be changed without notice.

US and foreign patents licensed from Dolby Laboratories.

## KENWOOD CORPORATION

14-6, Dogenzaka 1-chome, Shibuya-ku, Tokyo, 150-8501 Japan